

# ESTATE AUCTION

## Tuesday, Sept. 19th at 10:00 AM

**LOCATION:** 1517 Sullivan Loop, Owensboro, KY in Wrights Acres Subdivision at the corner of KY Hwy 405 and Wrights Landing Road east of Owensboro. Watch for signs

In order to settle the Gregory Schwallie Estate, Kurtz Auction & Realty Co has been authorized to sell the following, **regardless of price.**

## BRICK SPLIT LEVEL HOME



### UPPER LEVEL:

Living Room  
Kitchen  
Full bathroom  
3 bedrooms

### LOWER LEVEL:

Living Area  
Flex room/Bedroom  
Bathroom  
Storage space



### Property Amenities:

- 2300 square feet of living area.
- East Daviess County
- Within 3 miles of the bypass
- Large concrete block 28'x28' garage with additional 16'x20' storage area.
- Metal carport

**OPEN HOUSE FOR THE REAL ESTATE:  
Monday, September 11 - 4:00 PM to 6:00 PM**

**REAL ESTATE TERMS:** 10% down at the auction, balance on or before November 3rd, 2023. Possession with deed. Property taxes will be prorated for 2023. Bidders have 10 days prior to the auction for lead-based paint and other inspections.

**PERSONAL PROPERTY TERMS:** Payment in full at the auction by cash, check, Visa or Mastercard.

**PERSONAL PROPERTY ON OTHER SIDE**

**FOR MORE INFORMATION OR TO SEE THE REAL ESTATE VISIT [KURTZAUCTION.COM](http://KURTZAUCTION.COM) OR CALL DAVID HAWES, AUCTIONEER.**

**Owner: Gregory Schwallie Estate**

**800-264-1204**

**[kurtzauction.com](http://kurtzauction.com)**

Announcements made at auction take precedence over printed material

**KURTZ**  
AUCTION & REALTY®



**ESTATE**

# **AUCTION**

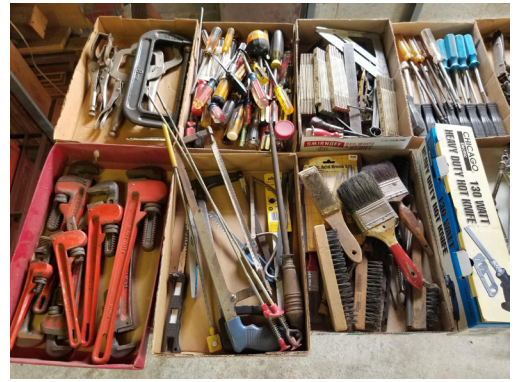
**Tuesday, Sept. 19th at 10:00 AM**

**LOCATION: 1517 Sullivan Loop, Owensboro, KY in Wrights Acres Subdivision at the corner of KY Hwy 405 and Wrights Landing Road east of Owensboro. Watch for signs**

## **PERSONAL PROPERTY**



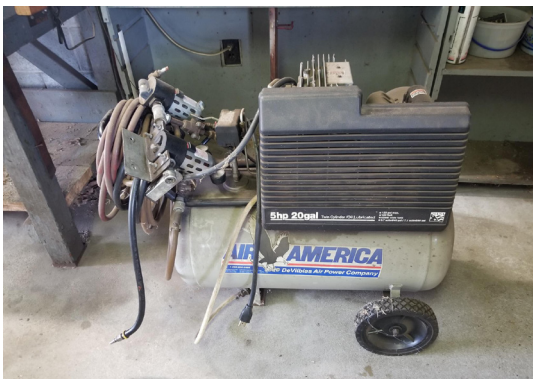
**TOOLS:**  
Generator, Lincoln welder, compressor, vertical sander, tool boxes, grinders, table saw, workbench, vise, shelves, lots of wrenches, saws, drills and handtools and other items.



**LAWN EQUIPMENT:**  
MTD tractor mower, 5'x10' trailer, Sears 12 hp tractor w/blade, push mowers, carriers, thatcher, roller Snapper yard cart, edger, misc. hand tool, etc.



**FURNITURE - MISC:**  
Grandfather clock, dining table and chairs, bedroom suites, couch, loveseats, TVs, coffee and end tables, wood/metal bench, book shelves, stereo/turntable, recliner, cedar chest, desk, cabinets, hospital bed, chairs, washer & dryer, file cabinets, kitchenware and much more.



**PERSONAL PROPERTY TERMS:** Payment in full at the auction by cash, check, Visa or Mastercard.

**HOME DETAILS ON OTHER SIDE**

**FOR MORE INFORMATION GO TO [KURTZAUCTION.COM](http://KURTZAUCTION.COM) OR CALL DAVID HAWES, AUCTIONEER.**

**Owner: Gregory Schwallie Estate**

**800-264-1204**

**[kurtzauction.com](http://kurtzauction.com)**

Announcements made at auction take precedence over printed material

# **KURTZ**

**AUCTION & REALTY®**