

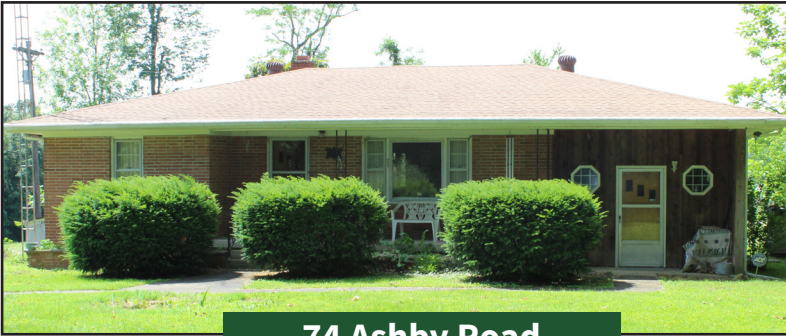
Estate AUCTION

Wednesday, August 2nd
10:00 AM

Location: 74 Ashby Road, Centertown, KY. From Hwy 231 in Hartford take Hwy 69 west 7 miles to Hwy 85 for 2.5 miles to Ashby Road. Watch for signs!

In order to assist in settling the Marjorie Condit Estate, Kurtz Auction and Realty Co. has been authorized to sell the following **regardless of price**:

TRACT 1 - TWO BEDROOM HOME ANTIQUES-COLLECTIBLES-FURNISHINGS



74 Ashby Road

- Two bedrooms
- Bath
- Living room
- Eat in kitchen
- Dining Room
- Family room
- Full basement with bath
- Hard wood flooring
- Central heat and air
- Back up propane available
- Attached greenhouse
- Implement barn
- Detached garage
- 1.75 acre lot

ANTIQUES - COLLECTIBLES- FURNISHINGS: Bow front china cabinet, glass front curio cabinet, cedar full size bed, cedar dressing table, chest of drawers, cherry full sized bed, cherry dresser and chest of drawers, hard rock maple buffet, dining table and chairs, china cabinet, maple desk, blanket chest, Hoosier style cabinet, coal oil lamps, Shinkle, Wilson & Kreis Coffee crate, sewing machine, large doll collection from around the world, egg baskets, occupied Japan pieces, Yorkshire china, commemorative plates, whiskey decanters, Shawnee pottery collection, handmade quilts, vintage cameras, large record collection, costume jewelry and 14K jewelry, vintage hats and gloves, Carnival glass, genealogy information, antique and vintage photos, military and CCC panorama photos, original artwork (Mrs. Condit was quite an artist), I.J. Target Sealed 8,.22 Revolver, Large collection of postage stamps, fishing rods and lures, primitive pieces, folk art, Bradas & Gheens candy jar, original Civil War documents and letters, first issue stamps, books, household items.

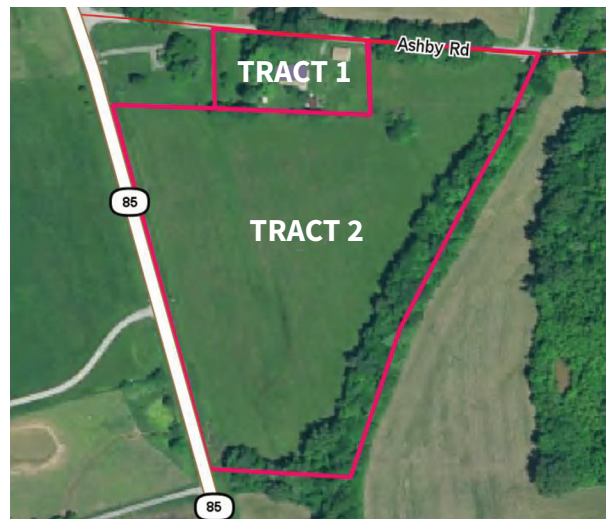
1975 Chevy Pickup, riding mower, hand tools, and much much more.

Firearms and coins have been removed from premises.

Tract 2- 9+/- acres

located on Hwy 85 and Ashby Road. This tract has approx. 361' of road frontage on Ashby Road and approx... 723' of footage along Hwy 85. This tract is gently rolling to flat and has good building sites or would be great crop or pasture land.

TERMS: Real Estate - 10% down at the auction, balance on or before September 5th, 2017. Possession with deed. 2017 property taxes will be prorated. Bidders have ten days prior to auction for lead based paint and other inspections. Personal Property - to be paid in full at the auction by cash, check or credit card.



Auctioneers note: Mrs. Condit took excellent care of her property. Both the house tract and the 9 acres are great properties that you will want to make time for! There is something here for everyone, especially anyone interested in Ohio County history! Call for scheduled viewing. - Amy Whistle, CAI, Auctioneer.

For more information or to see the real estate call Amy Whistle, CAI, Auctioneer. For more photos go to kurtzauction.com.

Owner: Marjorie Condit Estate
Executor: Hon. Perry Lewis

270-926-8553

800-264-1204

kurtzauction.com

KURTZ
AUCTION & REALTY®