



United States Department  
of Agriculture

Natural Resources  
Conservation Service

NRCS-CPA-026e  
8/2013

*Recd  
11-2-17  
MIDAS ✓  
sho/gpt ✓  
wetland ✓  
JPEG ✓*

**HIGHLY ERODIBLE LAND AND WETLAND CONSERVATION DETERMINATION**

Name Address:	Case Drilling Company 10725 McCamish Rd. Philpot, KY 42366	Request Date:	8/15/2017	County:	Daviess
Agency or Person Requesting Determination:	USDA-FSA	Tract No:	13921	FSA Farm No.:	8737

**Section I - Highly Erodible Land**

Is a soil survey now available for making a highly erodible land determination?	
Are there highly erodible soil map units on this farm?	

Fields in this section have undergone a determination of whether they are highly erodible land (HEL) or not; fields for which an HEL Determination has not been completed are not listed. In order to be eligible for USDA benefits, a person must be using an approved conservation system on all HEL.

Field(s)	HEL(Y/N)	Sodbust (Y/N)	Acres	Determination Date

The Highly Erodible Land determination was completed in the

**Section II - Wetlands**

Fields in this section have had wetland determinations completed. See the Definition of Wetland Label Codes for additional information regarding allowable activities under the wetland conservation provisions of the Food Security Act and/or when wetland determinations are necessary to determine USDA program eligibility.

Field(s)	Wetland Label*	Occurrence Year (CW)	Acres	Determination Date	Certification Date
	W	2017	6.8	10/31/2017	10/31/2017
	NW	2017	8.8	10/31/2017	10/31/2017

The wetland determination was completed in the field. It was mailed to the person on 10/31/2017

Remarks: The area being determined has 6.8 acres of Wetlands and 8.8 acres of Non-Wetlands. See attached map for wetland area.

I certify that the above determinations are correct and were conducted in accordance with policies and procedures contained in the National Food Security Act Manual.

Signature Designated Conservationist	Date
	10/31/2017

The U.S. Department of Agriculture (USDA) prohibits discrimination in all its programs and activities on the basis of race, color, national origin, gender, religion, age, disability, political beliefs, sexual orientation, and marital or family status. (Not all prohibited bases apply to all programs.) Persons with disabilities who require alternative means for communication of program information (Braille, large print, audiotape, etc.) should contact USDA's TARGET Center at 202-720-2600 (voice and TDD). To file a complaint of discrimination, write USDA, Assistant Secretary for Civil Rights, 1400 Independence Avenue, S.W., Stop 9410, Washington, DC 20250-9410, or call toll-free at (866) 632-9992 (English) or (800) 877-8339 (TDD) or (866) 377-8642 (English Federal-relay) or (800) 845-6136 (Spanish Federal-relay). USDA is an equal opportunity provider and employer.

# Certified Wetland Determination

## Daviess County, KY




FSA Farm No. 8731

Owner: Case Drilling Company

FSA Tract No. 13921

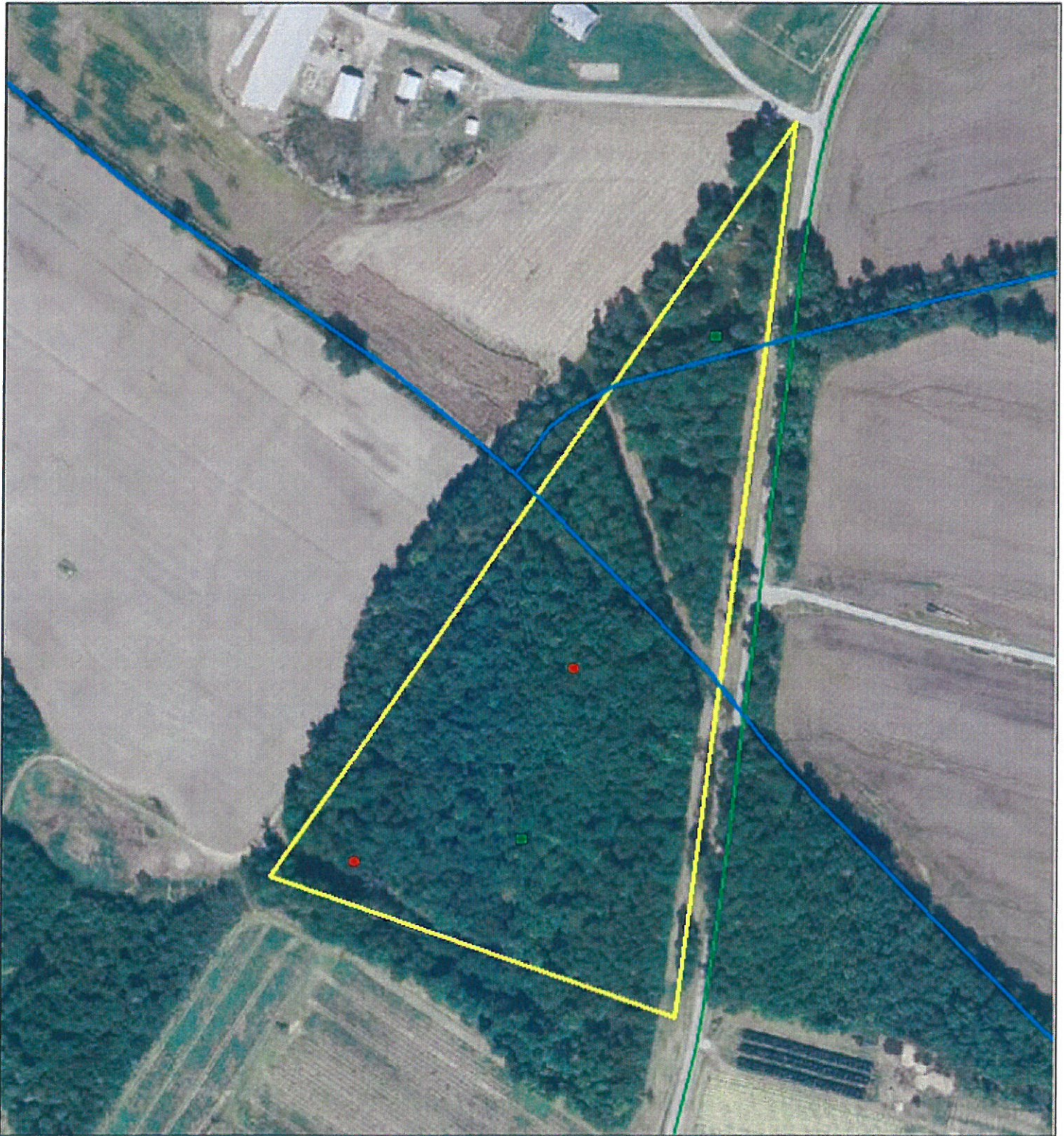


### Legend

-  Hydrography
- NW** Non-Wetland (8.8 acres)
-  Wetlands (6.8 acres)
-  Determination Area

Scale  
1:7,920  
(1"=660 ft.)





United States Department of Agriculture  
Farm Service Agency

Farm: 8892  
Tract: 13921

**Daviess County, KY**

1:3,103



**Legend**

National Wetland Inventory  
May 03, 2019  
SDE wetlands

**Wetland Determination Identifiers**

- Restricted Use
- ▼ Limited Restrictions
- Exempt from Conservation Compliance Provision
- hydro100k\_l\_ky059
- road100k\_l\_ky059
- street100k\_l\_ky059
- GIS\_KY.sde.clu\_a\_ky059

Disclaimer: Wetland identifiers do not represent the size, shape or specific determination of the area. Refer to your original determination (CPA-026 and attached maps) for exact wetland boundaries and determinations, or contact NRCS. This map is for FSA program purposes only.