

HENDERSON COUNTY, KY

LAND AUCTION

Tues., July 22nd - 10 AM

11567 CONLEY-THOMAS ROAD, BASKETT, KY

PRIME FARMLAND

120+/- Acres • Two Homes

SELLING IN 4 TRACTS

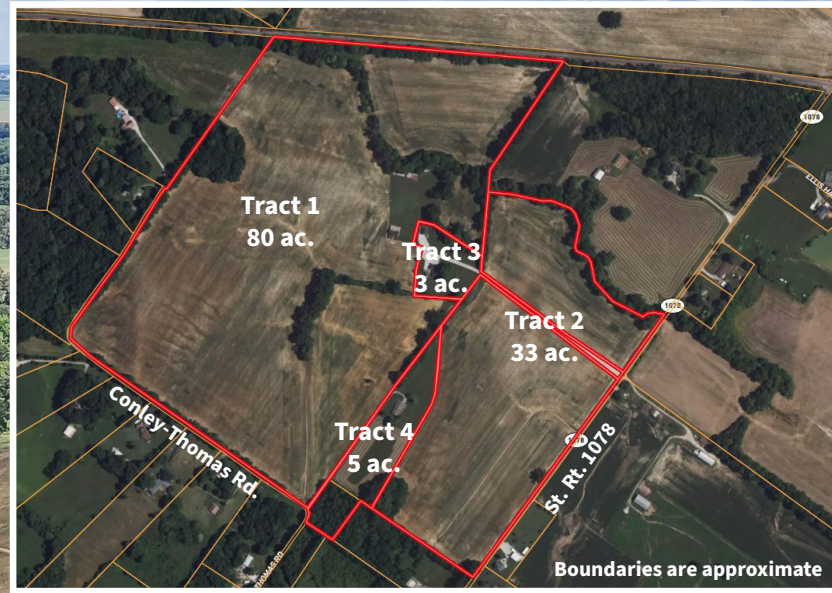
- 113+/- tillable acres
- Productive row crop soils
- Over 4,100 ft. of road frontage
- Two homes

Seller: Mary Lou Connolly Estate

**for more info.,
contact Jason
Blue, Auctioneer
or Kelsey Edge,
App. Auctioneer**

kurtz
AUCTION & REALTY.

812-452-3191
kurtzauction.com



HENDERSON COUNTY, KY

LAND AUCTION

Tues., July 22nd - 10 AM

PRIME FARMLAND (Selling in 4 tracts)

120+/- Acres • Two Homes



11567 Conley Thomas Rd
2 Bed • 2 Bath • 1860 sq. ft.

12637 State Route 1078
2 Bed • 2 Bath • 1230 sq. ft.

kurtz
AUCTION & REALTY.

For Tract Info, Home Info and terms, go to
kurtzauction.com or contact
Jason Blue at 812-452-3191
or Kelsey Edge at 270-926-8553

8601 North Kentucky Ave., Suite A
Evansville, Indiana 47725
kurtzauction.com

PRESORT STD
U.S. POSTAGE PAID
OWENSBORO, KY
42301
PERMIT #563