

AUCTION

Tuesday, Dec. 5th at 10:00 AM

LOCATION: 6520 Hwy. 431, Owensboro, KY

From the Wendell Ford Expressway take HWY 431 2.5 miles to the property.

Watch for signs

NEEV Properties LLC has authorized Kurtz Auction & Realty Co to sell the following properties **regardless of price.**

75.9 ACRES - 2 TRACTS - CROPLAND

Tract #1 - 1.00 acre

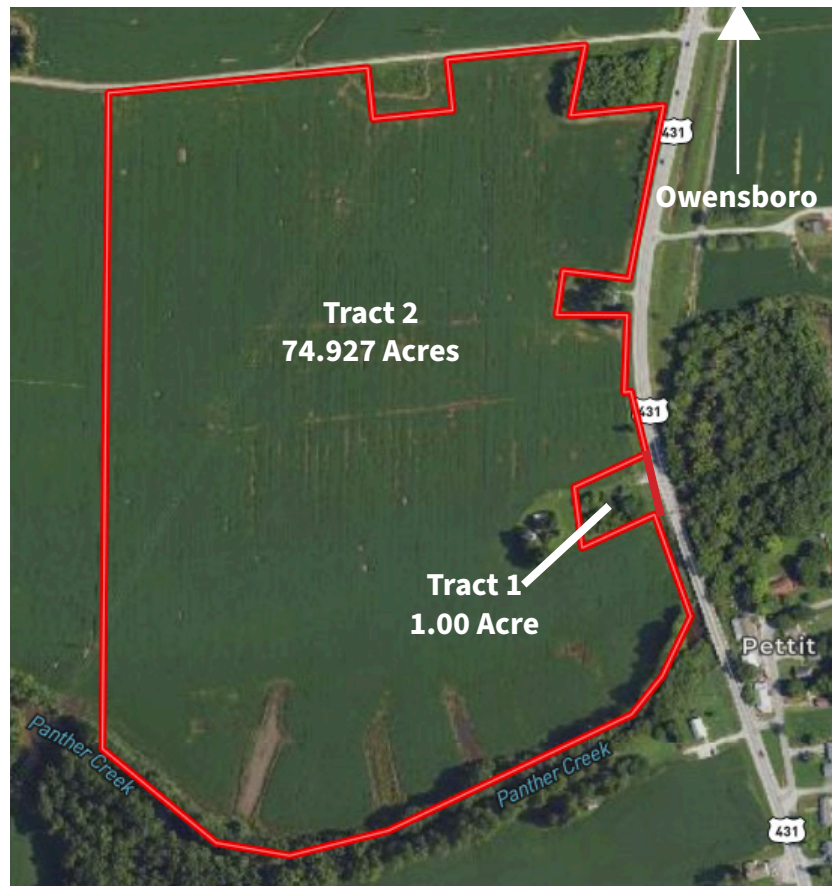
- Home - built 1886
- 1422 sqft, 3bd, 1 bath
- 173.78 ft. frontage on HWY 431
- Possible building site

Tract # 2 - 74.927 acres

- Primarily tillable farmland
- 1.6 miles to Frederica development
- 1252.43 ft. frontage on HWY 431

This is a great opportunity to buy tillable farmland just south of Owensboro “regardless of price”. Property is located on Hwy 431 approximately 2.5 miles from the Wendell Ford Expressway.

TERMS: 10% down at the auction, balance due on or before Jan 19th, 2024. Possession with the delivery of the deed at closing. Seller to pay property taxes in 2023, buyer pays 2024. Seller to convey all mineral rights they own.



FOR MORE INFORMATION OR TO SEE THE REAL ESTATE VISIT KURTZAUCTION.COM OR CALL DAVID HAWES, AUCTIONEER, 270-929-1211.

Owner: NEEV Properties LLC.

800-264-1204

kurtzauction.com

Announcements made at auction take precedence over printed material

2023

KURTZ
AUCTION & REALTY®