

ABSOLUTE AUCTION

Thursday, October 29th at 5:00 PM

Location: 845 Waterworks Rd. Winchester, KY. **Directions:** From the Winchester Bypass take Hwy 627 southwest 2 ¾ mile, then northwest on Waterworks Rd. (Hwy 1923). The acreage is on your right. Watch for signs.

Edge Lake Farm, LLC is dissolving their partnership and has authorized Kurtz Auction & Realty to sell the following to the highest bidder with **no minimum bid**.

96.27 ACRES BETWEEN WINCHESTER & LEXINGTON BEAUTIFUL LAKEVIEW BUILDING SITES 11 TRACTS - 5.71 AC TO 11.74 AC

Tract Info:

Tract 1- 8.74 +/- acres with 250.10' of blacktop frontage.

Tract 2- 9.81 +/- acres with 250.18' blacktop frontage.

Tract 3- 11.27 +/- acres with 250.10' blacktop frontage.

Tract 4- 11.74 +/- acres with 250.10' blacktop frontage.

Tract 5- 10.80 +/- acres with 250.10' blacktop frontage.

Tract 6- 7.64 +/- acres with 250.11' blacktop frontage, and a barn.

Tract 7- 5.72 +/- acres with 250.11' blacktop frontage, and an older home.

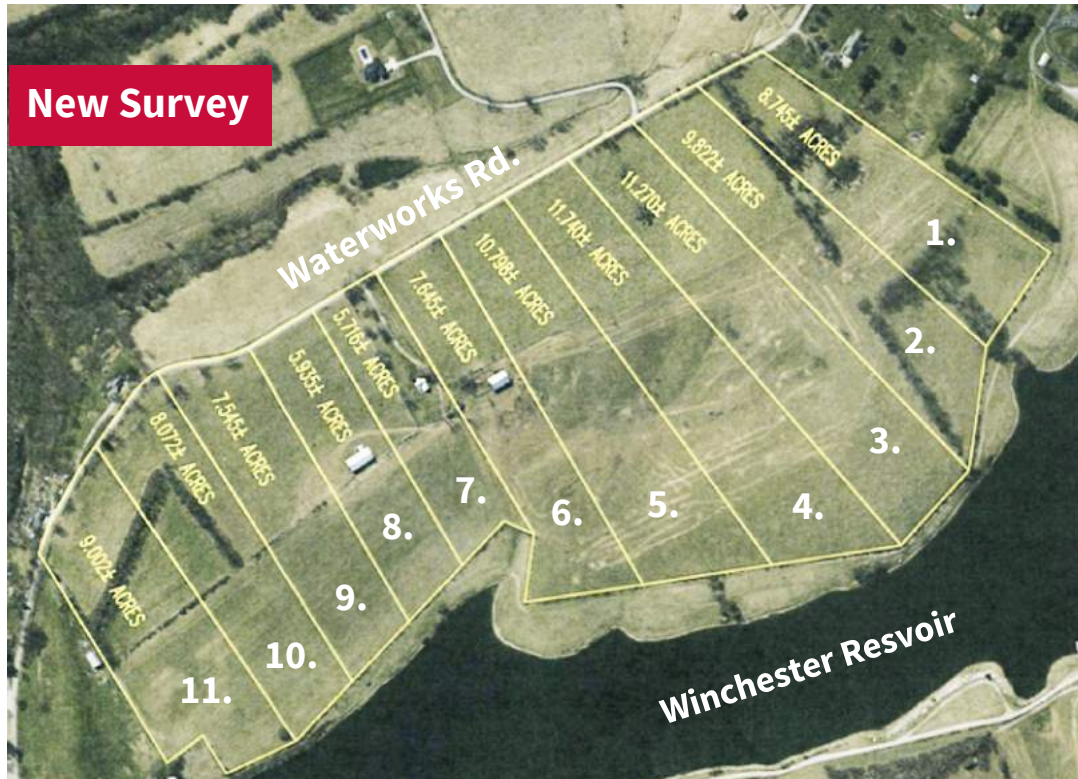
Tract 8- 5.94 +/- acres with 250.11' blacktop frontage, and a barn.

Tract 9- 7.54 +/- acres with 320.83' blacktop frontage.

Tract 10- 8.07 +/- acres with 321.42' blacktop frontage.

Tract 11- 9.00 +/- acres with 408.81' blacktop frontage.

Building Restrictions: Minimum of 2,000 sq. ft. of living space above ground. No manufactured housing.



Inspection: Thurs., October 15th & 22nd 4:30- 5:30 PM



For maps, drone footage and pictures go to kurtzauction.com or call Rob McDearman 502-475-2645 or Mike Melloan 270-929-1410, Auctioneers

Terms: 10% down at the auction, balance on or before December 15th, 2020. Possession with deed. 2020 property taxes will be paid by the seller. **NO BUYER'S PREMIUM!** The auction will be held on site in accordance with the COVID-19 guidelines and restrictions set forth by the Governor.

Owner: Edge Lake Farm, LLC

800-264-1204
kurtzauction.com



KURTZ
AUCTION & REALTY®

Announcements made at auction take precedence over printed material.