

Kurtz

AUCTION & REALTY.

305 Frederica St. • Owensboro, KY 42301

kurtzauction.com

PRESORT STD
U.S. POSTAGE PAID
OWENSBORO, KY
42301
PERMIT #563

**LIVE &
ON-LINE
AUCTION**
available at
kurtzauction.com

PREVIEW DATE:
Monday, March 6th (day before the sale)
12 pm - 2pm.
Private Showing by Appointment after March 1st.

Terms and Conditions:

PURCHASE TERMS: Paid in full at the auction by cash or check. VISA or MasterCard users will be charged a 3% convenience fee. All equipment and machinery sales on "as-is" basis. NO BUYERS PREMIUM. Announcements made day of sale take precedence over printed matter. LOADER AVAILABLE. Truck scale removal at Buyer's expense

ON LINE TERMS: The purchaser shall pay 10% down day of sale by wired funds. Balance due in full on or before March 10th, 2023 by wired funds. There is a 3% Buyer's Premium added to all online successful winning bids. An additional 3% added to total if using VISA or MasterCard.

POSSESSION: Possession shall be granted upon receipt and verification of payment in full.

SERVER & SOFTWARE TECHNICAL ISSUES: In the event there are technical difficulties related to the server, software or any other online auction-related technologies, Kurtz Auction and Realty reserves the right to extend bidding, continue the bidding, or close the bidding. NEITHER THE COMPANY PROVIDING THE SOFTWARE nor Kurtz Auction and Realty SHALL BE HELD RESPONSIBLE FOR A MISSED BID OR THE FAILURE OF THE SOFTWARE TO FUNCTION PROPERLY FOR ANY REASON. Email notifications will be sent to registered bidders with updated information as deemed necessary by Kurtz Auction and Realty. Any dispute between Kurtz Auction and Realty, its Agents or Representatives and the Buyer(s) will be tried in a court of jurisdiction in Daviess County, Kentucky. By bidding on the property, buyer agrees to all terms and conditions set forth.

AGENCY: Kurtz Auction and Realty and Representatives are agents of the Sellers. Buyer and or Bidder agrees to hold harmless and indemnify Kurtz Auction and Realty and its Agents and its Representatives from any and all claims, damages or suits including but not limited to awards, judgments, costs, fees, etc. Kurtz Auction and Realty, reserves the right to alter this agreement at any time. This will take place by updating this site. Please check back and review these terms as every time you use this site you are agreeing to the terms as they are written at that time.

BIDDER DEFAULT: Failure to complete a purchase is illegal and will result in one or more of the following (1) prosecution (2) loss of bidding privileges for Kurtz Auction and Realty auctions. If a bidder at any time feels his/her username, password or bidder number has been compromised due to lack of security by the bidder, notify Auctioneer immediately.

For additional information, contact Kurtz Auction and Realty, Joseph Mills, Auctioneer, at 1 (270) 903-9641.

TIME IS OF THE ESSENCE in regard to all auction terms.

FARM MACHINERY AUCTION

Tuesday, March 7th at 10 AM

**LIVE &
ON-LINE
AUCTION**
available at
kurtzauction.com

FARM MACHINERY HAY EQUIPMENT MOWERS • TRUCKS

LOCATION: 12165 Highway 2181, Hawesville, KY 42348.

Directions: from the intersection of HWY 144 and HWY 2181 in Pellville take HWY 2181 north.
Parking for auction is at Pellville Baptist Church directly across the street. Watch for signs.

As we no longer have a need for this equipment Kurtz Auction Has been authorized to sell the following **regardless of price.**



Owners: Thomas Fulkerson
Adam & James A. Jr. Jackson
Jeff Connor
Warren Smith
Stewart Foster

800-264-1204
kurtzauction.com

Announcements made at auction take precedence over printed material

2023

Kurtz

AUCTION & REALTY®

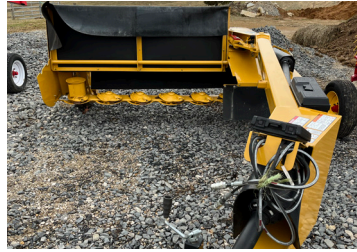
FARM MACHINERY • HAY EQUIPMENT • TRUCKS



2015 Vermeer 605N Hay Bailer
String or net wrap
Never used
540 PTO
Monitor and electronics
VIN #- 1VRM16149G1003129



2015 Vermeer M7040 Disk Mower
9' cut
540 PTO
Lightly used
Serial #- 1VR3070YXA3002074



2015 Vermeer Rebel TM700
9' cut
Never used
540 PTO
Vin#- 1VRV16196G1012029



2015 Vermeer TE170
4 Basket Tedder
Hydraulic fold & Raise
540 PTO
VIN#- 1VR3081E8GE012061



70 X10 Rice Lake Survivor Scale
Weight monitor and printer
Removal at buyers expense!!



2012 GatorMade Gooseneck Trailer 20' w/ 5' Ramps
Duel tandem
16,500 GVW
VIN #- 4Z1GF2521DS001393



Woods 6' Gill Pulverizer



Kubota RTV900 4X4 Diesel
1,372+ hrs
Power steering
Enclosed cab



2020 New Holland ProCart 819
8 wheel V Rake w/ Kicker wheel
Only 30 acres worth of use
PIN #- YLZSG0439



New Holland 616
8' cut Disk mower
540 PTO
PIN #- Y7B140610



Bushhog 2715 Legend
15' cut w/ stump jumpers
540 PTO
Heavy duty gear boxes
Lightly used
Serial #- 12-04373



2003 A.T.M Flatbed Trailer
8.5 x 20 FT.
6,000 lbs. Axle & 12,000 GVW
Pull out ramps
Lights & breaks
Will have to apply for title
vin# 1FDWF36818ED22623



2020 New Holland Procart 1022 V Rake
10 wheel, High clearance, ground driven
No kicker wheel
Hydraulic fold and raise
Lightly used
PIN# YLZSG0089



2020 New Holland DuraDisc 109M 9' Disk Mower
2 bladed
Tarp in good condition
PTO & Hydraulic
PIN# HBJDD109PLN150088



1991 International 4900 Feed Truck
Engine replaced in 2012
613,000+ miles (odometer was not turned back when engine replaced)
Warren feed Bed
Holds 10 tons of feed
Drives fine
Vin# -1HTSDNSP8MH372152



1993 WIL-RO Grain/Dump Gooseneck Trailer
Duel tandem
Battery powered Hydraulic lift
18,000 Lbs. GVWB
9,000 LBS. GAWR
VIN: 1W9G162G2P1012322



2008 Ford F-350 XL Single Cab Utility Truck
150,741+ miles
11' CM flatbed installed last year
5.4L gas engine , 6 speed trans.
Tool box and fuel tank included
Manual windows and locks
Venal seats
Vin# 1FDWF36518ED22623



2005 Chevy 3500 Single Cab Utility Truck
244,250+ miles
6.0L Gas Engine
Allison automatic transmission
9' utility bed
Cloth interior w/ manual windows & locks
Vin# 1BJC34U35E319417



2013 Ford F-350 XLT Super Duty 1 Ton Single Cab
83,925+ miles
6.7L Diesel Engine, Dual rear wheel
9' Hillsboro flatbed installed less than a year ago
Power windows and locks
Vin # 1FDRF3HT4CEB06203



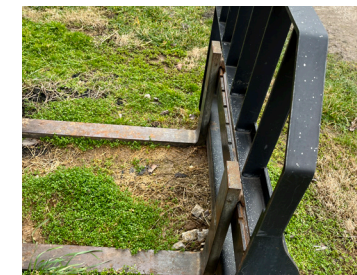
Killbros Gravity Flow wagon
350' grain body



Allied by Farm King 150108 10' Box Blade
Full range motion, Hydraulic



Hay Spear



John Deere Pallet Fork



John Deere Hay Spear



Ford 1600 Tractor
850 hrs.
540 PTO
Serial #- U107926



2015 Bobcat t650 Compact Skid Steer on Tracks - Diesel
2 speed, 74 HP, 1140+ hours
Extra large bucket
PIN #- ALJG16236



Badger BN5100 Feed Mixer
No grinder
Electric driven
3,000 lbs. Capacity



Hutchinson 8' Auger



Cammond 12' Box Blade
2 brand new tires
Lightly used
Model #- DS12FL
Serial # -09067918



3 ton Self Feeder w/Creepers



3 ton Self Feeder
No creepers



21 Ft. Krause Disk w/ 24 ft. Roller
Hydraulic fold and raise



Lowe G-72 Grapple Bucket Attachment
Serial # - 2-1000331



Stull Feeders Battery Powered Feeder w/Auger
Holds 500 lbs. of feed



50+/- 5X6 Round Bails of Hay W/ netting stored inside



Grain-O-Vator grain cart
6 ton capacity , New tires
Serial #- 12973



24' Field Cultivator

**For additional information,
see kurtzauction.com or contact
Joseph Mills, auctioneer at
270-903-9641**