

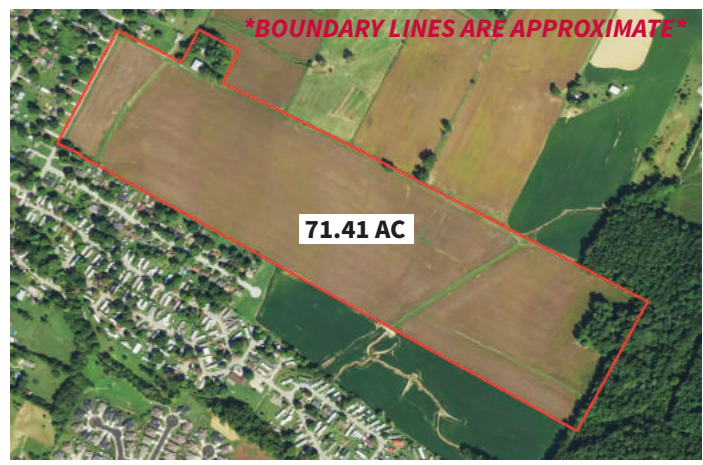


71.41 AC **FOR SALE** **\$1,300,000**
Graham Ln, Owensboro, KY

PRIME GROUND - CROPLAND - DEVELOPMENT POTENTIAL

DIRECTIONS: From the intersection of HWY 144 and Graham Ln, take Graham Ln south 0.5 miles to the farm.

- PROPERTY FEATURES:**
- 71.41 acres w/ approx. 790' of frontage on Graham Ln
 - Nearly all tillable w/ a small amount of woods
 - Predominate soil types are Alford, Patton, Robbs, & Uniontown silt loams
 - Building
 - Lean-to
 - Located near Yellow Creek Park, Owensboro Health Hospital, & several new residential developments



THE FARM IS CURRENTLY IN PRODUCTION SO PLEASE CONTACT THE AGENT FOR ANY SHOWINGS OR QUESTIONS

Go to kurtzauction.com for additional photos



Contact:
 Clay Taylor
 Kurtz Auction & Realty
 270-926-8553

kurtz
 AUCTION & REALTY®