

Tract 1



United States Department of Agriculture
Farm Service Agency

Farm: 4230
Tract: 535

McLean County, KY

1:4,926

November 13, 2020



Legend

- National Wetlands Database
- Wetland Determination Identifiers
 - Restricted Use
 - Unrestricted Use
 - State Wetland Conservation Compliance Provisions
 - Water Quality
 - Grasslands
- NAIP USDA CONUS PRIME
- RGB
 - Red - Band 1
 - Green - Band 2
 - Blue - Band 3

Disclaimer: Wetland identifiers do not represent the size, shape or specific determination of the area. Refer to your original determination (CPA-026 and attached maps) for exact wetland boundaries and determinations, or contact NRCS. This map is for FSA program purposes only.

Tract 1



United States Department of Agriculture
Farm Service Agency

Farm: 4230
Tract: 3908

McLean County, KY

1:3,103

November 13, 2020

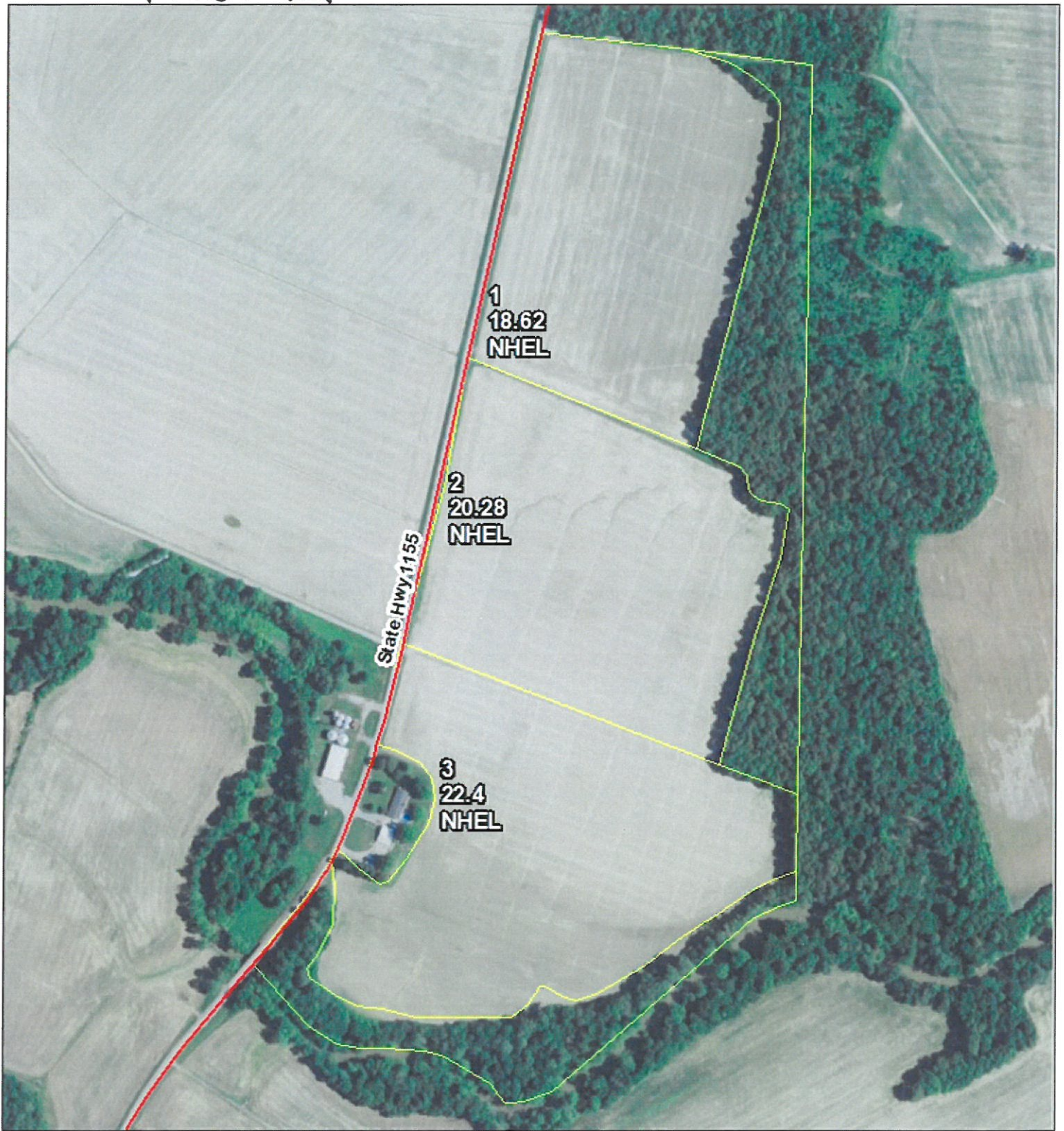


Legend

- National Wetland Database wetlands
- Wetland Determination Identifiers
 - Restricted Use
 - ▲ Limited Restrictions
 - Conservation Compliance Provisions
 - Special Use (L, X, Y, Z)
 - GRS (N, S, O, U, V, W, X, Y, Z)
- NAIP USDA_CONUS_PRIME
- RGB
 - Red - Band 1
 - Green - Band 2
 - Blue - Band 3

Disclaimer: Wetland identifiers do not represent the size, shape or specific determination of the area. Refer to your original determination (CPA-026 and attached maps) for exact wetland boundaries and determinations, or contact NRCS. This map is for FSA program purposes only.

TRACT 2



United States Department of Agriculture
Farm Service Agency

Farm: 4230
Tract: 536

McLean County, KY

1:4,870

November 13, 2020



Legend

- National Wetland Inventory (NWI) Wetland Determination Identifiers
- Restricted Use
- Unlimited Restrictions
- Designated Conservation Compliance Provisions
- Approved by USFWS
- GIS Attribute Code: 42119
- NAIP USDA CONUS PRIME
- RGB
- Red - Band 1
- Green - Band 2
- Blue - Band 3

Disclaimer: Wetland identifiers do not represent the size, shape or specific determination of the area. Refer to your original determination (CPA-026 and attached maps) for exact wetland boundaries and determinations, or contact NRCS. This map is for FSA program purposes only.

Tract 3



United States Department of Agriculture
Farm Service Agency

Farm: 4227
Tract: 1014

McLean County, KY

1:4,533

November 13, 2020

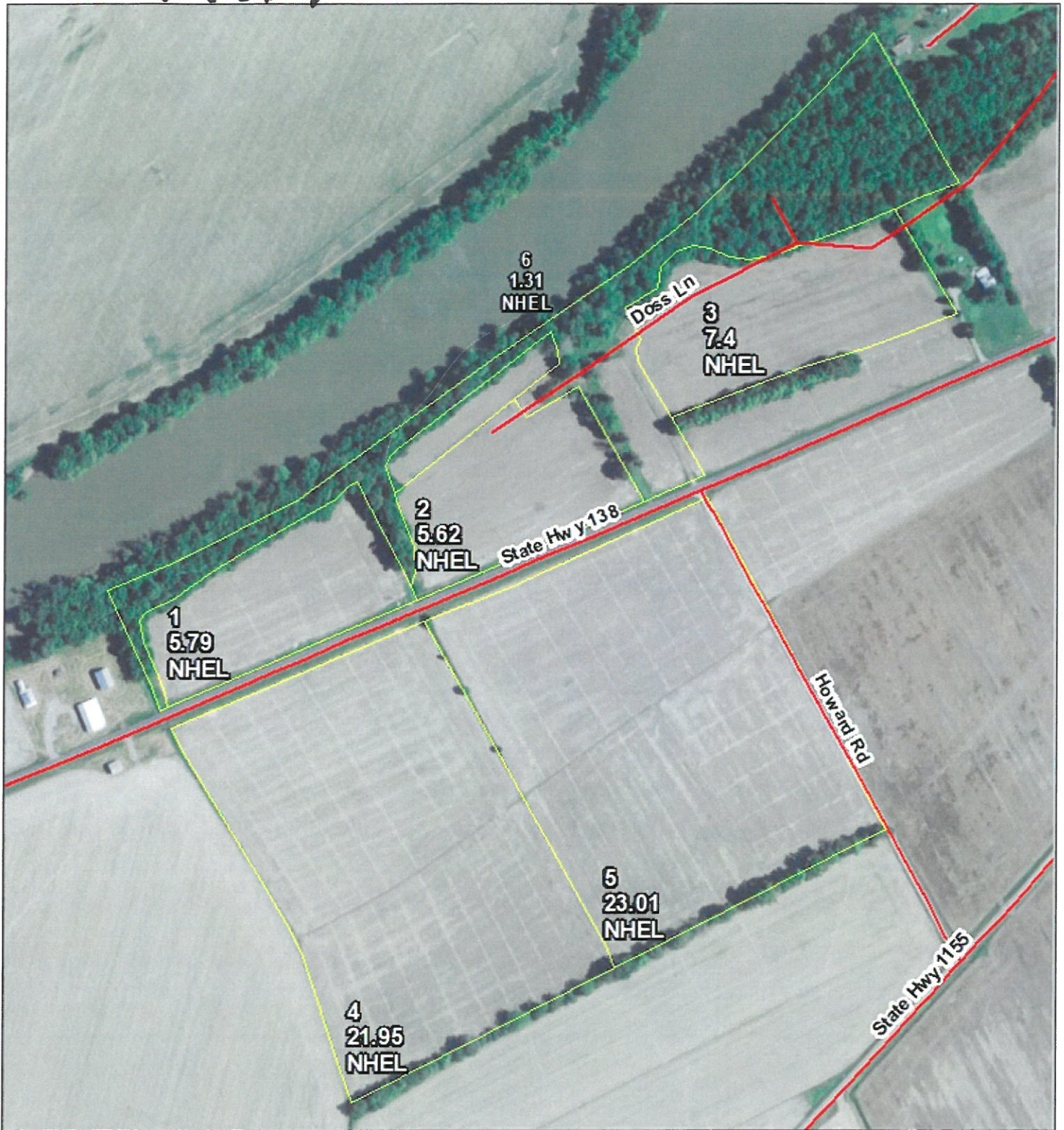


Legend

- National Wetlands Database
- Wetland Determination Identifiers
 - Restricted Use
 - Unrestricted Use
 - Conservation Compliance Provisions
 - Area of Concern
 - Grassland
- NAIP USDA CONUS PRIME
- RGB
 - Red Band 1
 - Green Band 2
 - Blue Band 3

Disclaimer: Wetland identifiers do not represent the size, shape or specific determination of the area. Refer to your original determination (CPA-026 and attached maps) for exact wetland boundaries and determinations, or contact NRCS. This map is for FSA program purposes only.

Tract 4



United States Department of Agriculture
Farm Service Agency

Farm: 4230
Tract: 1003

McLean County, KY

1:4,740

November 13, 2020



Legend

- National Wetland Inventory (NWI) wetlands
- Wetland Determination Identifiers
 - Restricted Use
 - Limited Restrictions
 - Existing Conservation Compliance Provisions
 - Formerly Upland
 - GIS Accuracy (N, K, F, 1, 2)
- NAIP USDA CONUS PRIME
- ROB
 - Red - Band 1
 - Green - Band 2
 - Blue - Band 3

Disclaimer: Wetland identifiers do not represent the size, shape or specific determination of the area. Refer to your original determination (CPA-026 and attached maps) for exact wetland boundaries and determinations, or contact NRCS. This map is for FSA program purposes only.

Tract 5



United States Department of Agriculture
Farm Service Agency

Farm: 4227
Tract: 1005

McLean County, KY

1:3,103

November 13, 2020



Legend

- National Wetland, SDE wetland
- Wetland Determination Identifiers
 - Restricted Use
 - Limited Restrictions
 - Exempt from Conservation Compliance Provisions
- Area of Concern
- GIS_Agriculture_KY19
- NAIPUSDA_CONUS_PRIME
- ROB
 - Red Band 1
 - Green Band 2
 - Blue Band 3

Disclaimer: Wetland identifiers do not represent the size, shape or specific determination of the area. Refer to your original determination (CPA-026 and attached maps) for exact wetland boundaries and determinations, or contact NRCS. This map is for FSA program purposes only.