



North Based on  
Kentucky State Plane (South)  
NAD 83, NAVD 88  
OSGMO2

**OHIO COUNTY  
KENTUCKY  
JUNE 6, 2023**

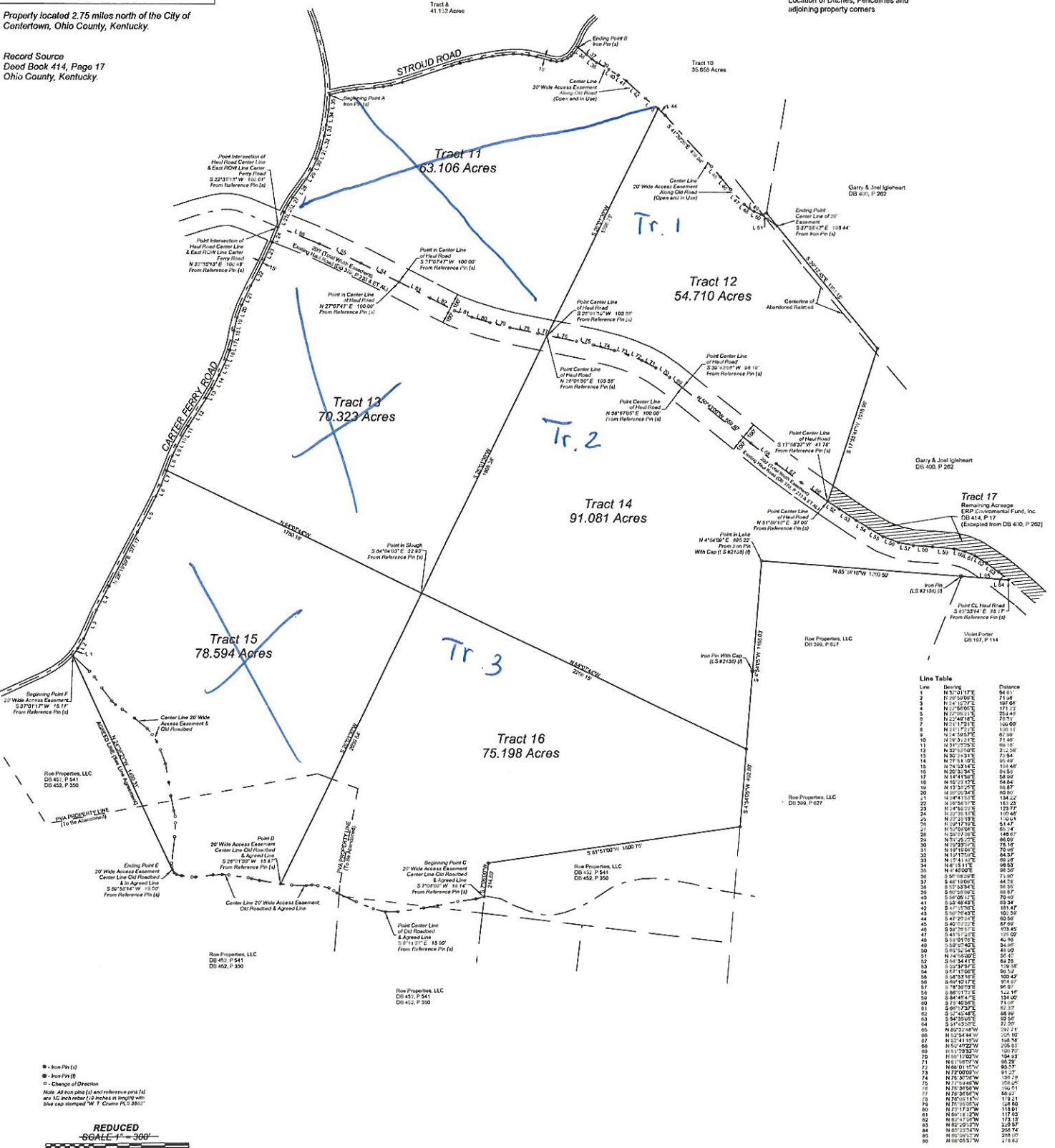
**Client & Owner  
ERP ENVIROMENTAL FUND, INC.  
216 School Drive  
Shrewsbury, WV 25015**

This property is subject to any & all easements and / or right of ways of record.  
100% of this survey was performed using Hemisphere S321 dual frequency RTK equipment.

Right of ways established per: State Statute (Min. 15' from center) Location of Ditches, Fences and adjoining property corners

Property located 2.75 miles north of the City of Centertown, Ohio County, Kentucky.

Record Source  
Deed Book 414, Page 17  
Ohio County, Kentucky.



**Line Table**

Line	Bearing	Distance
1	N 87° 01' 17" E	58.81
2	N 89° 50' 07" E	71.08
3	N 81° 52' 27" E	187.00
4	N 27° 06' 51" E	253.43
5	N 11° 12' 21" E	100.00
6	N 14° 55' 57" E	81.90
7	N 12° 53' 17" E	71.60
8	N 31° 27' 00" E	96.18
9	N 30° 20' 00" E	112.20
10	N 30° 13' 17" E	70.54
11	N 71° 13' 11" E	65.48
12	N 20° 53' 34" E	65.50
13	N 10° 52' 37" E	64.84
14	N 10° 23' 17" E	64.84
15	N 10° 23' 17" E	64.84
16	N 10° 23' 17" E	64.84
17	N 10° 23' 17" E	64.84
18	N 10° 23' 17" E	64.84
19	N 10° 23' 17" E	64.84
20	N 10° 23' 17" E	64.84
21	N 10° 23' 17" E	64.84
22	N 10° 23' 17" E	64.84
23	N 10° 23' 17" E	64.84
24	N 10° 23' 17" E	64.84
25	N 10° 23' 17" E	64.84
26	N 10° 23' 17" E	64.84
27	N 10° 23' 17" E	64.84
28	N 10° 23' 17" E	64.84
29	N 10° 23' 17" E	64.84
30	N 10° 23' 17" E	64.84
31	N 10° 23' 17" E	64.84
32	N 10° 23' 17" E	64.84
33	N 10° 23' 17" E	64.84
34	N 10° 23' 17" E	64.84
35	N 10° 23' 17" E	64.84
36	N 10° 23' 17" E	64.84
37	N 10° 23' 17" E	64.84
38	N 10° 23' 17" E	64.84
39	N 10° 23' 17" E	64.84
40	N 10° 23' 17" E	64.84
41	N 10° 23' 17" E	64.84
42	N 10° 23' 17" E	64.84
43	N 10° 23' 17" E	64.84
44	N 10° 23' 17" E	64.84
45	N 10° 23' 17" E	64.84
46	N 10° 23' 17" E	64.84
47	N 10° 23' 17" E	64.84
48	N 10° 23' 17" E	64.84
49	N 10° 23' 17" E	64.84
50	N 10° 23' 17" E	64.84
51	N 10° 23' 17" E	64.84
52	N 10° 23' 17" E	64.84
53	N 10° 23' 17" E	64.84
54	N 10° 23' 17" E	64.84
55	N 10° 23' 17" E	64.84
56	N 10° 23' 17" E	64.84
57	N 10° 23' 17" E	64.84
58	N 10° 23' 17" E	64.84
59	N 10° 23' 17" E	64.84
60	N 10° 23' 17" E	64.84
61	N 10° 23' 17" E	64.84
62	N 10° 23' 17" E	64.84
63	N 10° 23' 17" E	64.84
64	N 10° 23' 17" E	64.84
65	N 10° 23' 17" E	64.84
66	N 10° 23' 17" E	64.84
67	N 10° 23' 17" E	64.84
68	N 10° 23' 17" E	64.84
69	N 10° 23' 17" E	64.84
70	N 10° 23' 17" E	64.84
71	N 10° 23' 17" E	64.84
72	N 10° 23' 17" E	64.84
73	N 10° 23' 17" E	64.84
74	N 10° 23' 17" E	64.84
75	N 10° 23' 17" E	64.84
76	N 10° 23' 17" E	64.84
77	N 10° 23' 17" E	64.84
78	N 10° 23' 17" E	64.84
79	N 10° 23' 17" E	64.84
80	N 10° 23' 17" E	64.84
81	N 10° 23' 17" E	64.84
82	N 10° 23' 17" E	64.84
83	N 10° 23' 17" E	64.84
84	N 10° 23' 17" E	64.84
85	N 10° 23' 17" E	64.84
86	N 10° 23' 17" E	64.84

Map No. 21185(0)550  
Map No. 21185(0)550  
Map No. 21185(0)450  
Map No. 21185(0)250  
Date: June 6, 2023

**ERP DIVISION -  
TRACTS 11-16**

SCALE: 1" = 300' DRAWN BY: GNB REVISID:  
DATE: 06-23 APPROVED BY: WTC

BIGGERSTAFF, WARD & ASSOCIATES, PLLC  
WILLIAM T. CRUME, PLS #3862  
125 E. CENTER STREET, PO BOX 191  
HARTFORD, KY 42347  
PHONE: (270) 298-0257

DRAWING NO. C674C

**SURVEYOR'S CERTIFICATE**  
I hereby certify that the survey depicted by this plat was performed under my direct supervision by the method of GPS. The unadjusted mathematical error of closure ratio of the survey was 1 : 110,580, and was not adjusted unless noted below. This survey and plat meets the requirements of a rural boundary survey as described in the Minimum Technical Standards, 201 KAR 18.150. Survey was completed by me on June 6, 2023, and signed by me on June 26, 2023.

*[Signature]*  
William T. Crume, PLS #3862

**STATE OF KENTUCKY**

**WILLIAM T. CRUME**  
3862

**LICENSED PROFESSIONAL LAND SURVEYOR**

Tract 15 Line Table - 20' Wide Access Easement  
Tract 15 & 16 Line Table - Center Line Old Roadbed  
Tract 11 Line Table - South ROW Line Stroud Rd.