

ESTATE AUCTION

Thursday, June 29th at 5:30 PM

LOCATION: 1610 Griffith Avenue, Owensboro, KY.

In order to assist in settling the Jane Latimer Stevenson Estate and Trusts, Kurtz Auction and Realty has been authorized to sell the following **regardless of price:**

HISTORIC HOME ON 1.17 ACRES IN THE HEART OF THE DOGWOOD AZALEA TRAIL ON GRIFFITH AVENUE



Main Level:

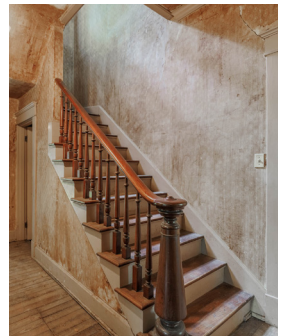
Living Room with fireplace
Kitchen
Breakfast nook
Formal room with fireplace
Bedroom
Bathroom with walk in shower
Screened in back porch

Second Floor:

Three guest bedrooms
Full bath

Basement

Washer/Dryer hookup
Small half bath
Storage space
Access to back porch



Other Features Include: Central heat and air (new in 2020)
One car garage
Barn with loft
House built in 1881



AUCTIONEER'S NOTE: Opportunities like this are few and far between. The options are wide open on this one. Whether you purchase and choose to retain the rich history of the property or start anew, you will have plenty of options to make it your own. Be sure and check kurtzauction.com or **contact Amy Whistle, Auctioneer for more details**

Terms on Real Estate: 10% down at the auction, remaining balance due on or before Monday, August 14th, 2023. 2023 property taxes will be prorated.

FOR PRIVATE VIEWING, CALL AMY WHISTLE, AUCTIONEER.

Owner: Jane Latimer Stevenson Estate and Trusts
Executor: William B. Taylor
Trustee: Jesse T. Mountjoy, Esq.
Counsel for Estate and Trusts: Sullivan Mountjoy, PSC

800-264-1204

kurtzauction.com

KURTZ

AUCTION & REALTY®