

AUCTION

Thursday, November 19th at 4 PM

Location: From the west side of Owensboro, KY take Hwy 56 W. 9 miles to Hwy 815 in West Louisville, then Hwy 815 South for 5 miles to properties. Watch for signs.

As I no longer have a use for these properties, I have authorized Kurtz Auction & Realty to sell the following:

42.68 Acres - 3 Tracts Building Sites - Pasture - Woods

Tract #1 - 11.018 Acres

- Flat to gently rolling mainly wooded land
- Building site
- Some mature timber
- 482.46 ft. of frontage on HWY 815

Tract #2 - 20.791 Acres

- Gently rolling to rolling reclaimed land
- Building site
- 100.53 ft. of frontage on HWY 815

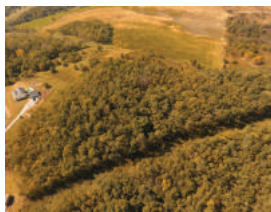
Tract #3 - 10.871 Acres

- Gently rolling to rolling reclaimed land
- Building site
- 134.15 ft. of frontage on HWY 815

- Properties were surveyed in 1999
- County, water & electricity available



Inspection Anytime! Feel free to walk or drive the property at your own risk.



For additional information, photos & a drone flyover go to kurtzauction.com or call Joseph Mills at 270-903-9641.

Terms: 10% down at the auction, balance in 45 days. Possession with deed. 2020 property taxes paid by the seller. The auction will be held on site in accordance with the COVID-19 guidelines and restrictions set forth by the Governor.

Owner: Rebecca Whittaker

800-264-1204
kurtzauction.com



KURTZ
AUCTION & REALTY®

Announcements made at auction take precedence over printed material.