

AUCTION

Tuesday, October 27th at 4:30 PM

Location: 4975 Veach Road, Owensboro, KY

Directions: From Hwy 231 and Veach Road at the Owensboro Community & Technical College go west on Veach Road 0.8 mile to the property. Watch for signs

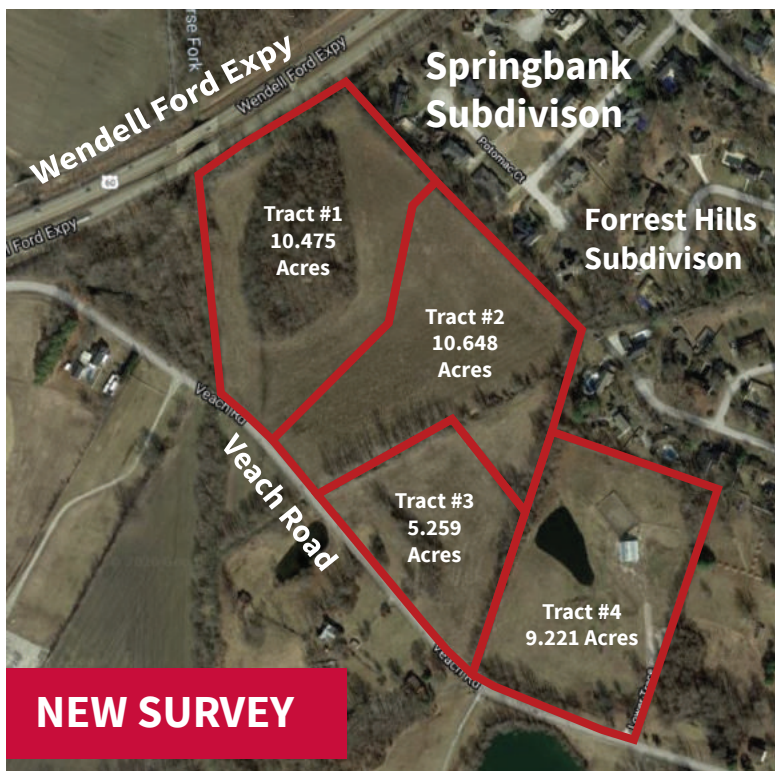
Kurtz Auction & Realty Co has been authorized to sell the following property at auction **regardless of price:**

35.539 Acres - 4 Tracts

Exceptional Building / Development Land on Veach Rd.



Close to, and/or adjoining the locations below:



Tract #1

- 10.475 acres that backs up to Spring Bank
- Wooded hilltop building sites
- Sewer availability & water close by

Tract #2

- 10.648 acres that backs up to Spring Bank & Forrest Hills
- Good building sites
- Sewer availability & water close by

Tract #3

- 5.259 acres
- Good building sites
- Sewer & water available

Tract #4

- 9.221 acres
- Backs up to Forrest Hills
- Several locations for building sites
- Horse barn with stalls, electricity & water
- Small Lake
- Sewer & water available

- **Tracts could be further developed into residential subdivisions or private country estates**

Auctioneer's Note: This auction provides the rare opportunity to invest in outstanding large Executive/Estate building tracts close to nearly everything in Owensboro, the Owensboro Community & Technical College, Daviess County High School, College View Middle and Deer Park Elementary Schools, shopping, restaurants, and the US 60-US 231 interchange, yet still has the feel of country living. These tracts would be great for individuals wanting to build a stately country residence or for residential development. Seldom does a property become available with these extraordinary features, all selling regardless of price. - David Hawes, Auctioneer

For more information go to kurtzauction.com or contact David Hawes, Auctioneer

Terms: 10% down at the auction; balance by Dec 11th, 2020. 2020 taxes paid by the seller. Attendees are expected to maintain social distancing and abide by all the other directives issues by the Governor regarding Covid-19.

Seller: Terry Woodward

Portions of this land is in the floodway or flood zone.
Current zoning is Agricultural Urban.

Announcements made at auction take precedence over printed material

800-264-1204
kurtzauction.com

KURTZ
AUCTION & REALTY®