

TIMBER / BUILDING TRACT

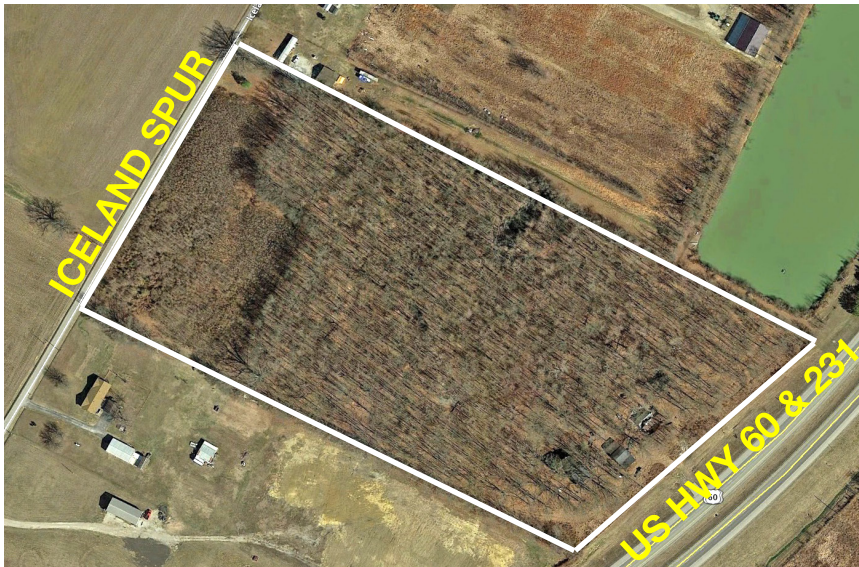
AUCTION

THURSDAY, AUGUST 27, 10:00 A.M.

Location: From the US HWY 60 By-Pass Extension (Exit 21) east of Owensboro, KY go 4.5 miles to the property. Watch for signs!

Since my husband has passed away, I have authorized Kurtz Auction & Realty Co. to sell the following to the highest bidder *with no minimum bid*:

18.84 ACRES OF WOODED LAND

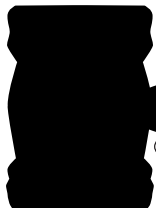


- Four lane US HWY 60 / 231 and Iceland Spur frontage and access
- Marketable timber
- Close proximity to the new Owensboro Health hospital campus
- Cabin in poor condition
- Small pond
- **Inspection: Call Amy Whistle, Auctioneer for more details**

TERMS: 10% down day of sale, balance in 45 days. Possession with deed. 2015 property taxes will be prorated. Property is in the flood plane.

Owner: Mary Brown

Announcements made day of sale take precedence over printed material.



2015

Kurtz

AUCTION & REALTY CO.

270-926-8553

800-264-1204

305 FREDERICA STREET
OWENSBORO, KENTUCKY 42301

kurtzauction.com