

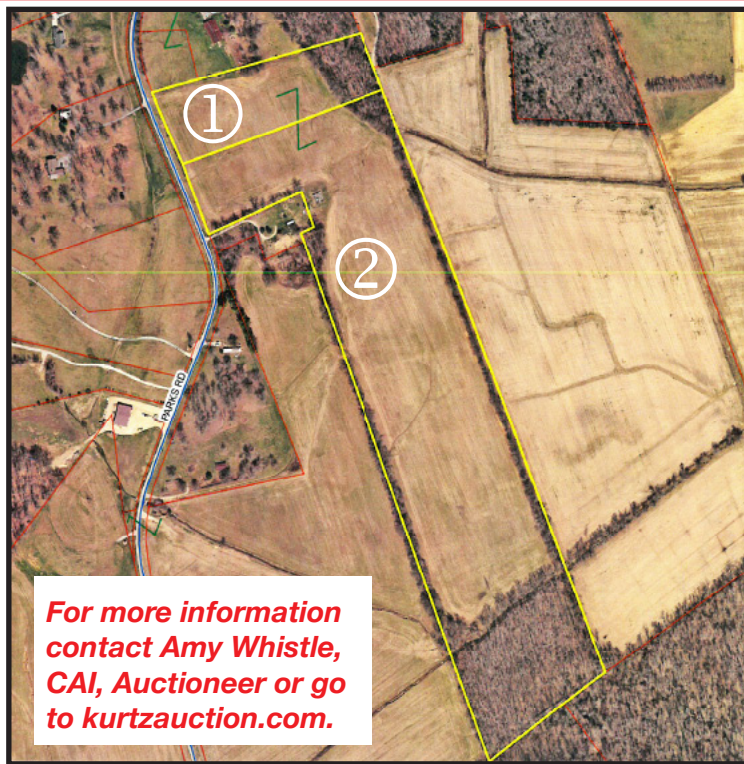
AUCTION

THURS. MAY 19TH
5:30 P.M.

Location: 9705 Parks Road, Owensboro KY. From HWY 231 six miles south of Owensboro, turn southwest on Red Hill-Maxwell Rd. 1.3 miles, then south on Parks Road 1.8 miles to the property. Watch for signs!

Since I have decided to sell this property, I have authorized Kurtz Auction & Realty Co. to sell the following **regardless of price:**

47.78 ACRES IN TWO TRACTS



**For more information
contact Amy Whistle,
CAI, Auctioneer or go
to kurtzauction.com.**

Tract One:

- 6.478 Acres of gently rolling cropland
- Good building sites
- Partially wooded
- Primary soil types are Hosmer and Bonnie silt loams
- 338.74' of blacktop frontage

Tract Two:

- 41.3 Acres of gently rolling to flat crop and wooded land
- Primary soil types are Hosmer and Belknap silt loams
- 322' of blacktop frontage
- There is a poured basement on this tract

FSA calls for a total 34.53 tillable acres.

County water available to both tracts.

This farm is not rented for the 2016 crop year. Buyer gets immediate farming rights.

Terms: 10% down day of sale, balance due within 45 days. Property taxes for 2016 will be prorated. No buyer's premium. Feel free to inspect the property at your own risk.

Auctioneer's Note: This farm has it all, favorable cropland, building sites with good road frontage - all just nine miles from the Wendell H. Ford Expressway (formerly the Owensboro Bypass). Get your finances ready and come ready to bid and buy!
- Amy Whistle, CAI, Auctioneer

Sellers: James and Beverly Mills

Announcements made day of sale take precedence over printed material.



270-926-8553

800-264-1204

305 FREDERICA STREET
OWENSBORO, KENTUCKY 42301
kurtzauction.com

2016