

Truck and Farm Machinery

Truck: 2016 Ford F-150 Lariat 4x4 Off Road, crew cab pickup.

Tractors: 2006 JD 7220 front wheel assist tractor with 2168 hrs, cab, duals and JD 740 Classic loader with hay prong and bucket; 2002 JD 7410 tractor with 3908 hrs, cab and weights; 2002 JD 4410 Hydro diesel tractor with 578 hrs. and 300 CX loader with bucket and hay prong. **Hay Equipment:** Kuhu GMD 700 GII HD disc mower; N.H. 616 disc mower; Tonuth GTH 500 hay tedder; Kuhn Speed Rake 110 hay rake; JD 586 Mega Wide round baler; HS bale wagon; JD HX 15 bat-wing mower; Howse 5' mower. **Tillage & Stock Equipment:** Land Pride RB 3596 hyd. blade; King Kutter 6 ft. blade; Ford 9 ft. hyd. disc; 7 ft. chisel plow; 11 ft. roller; pull sprayer; 3 pt hitch sprayer; wagons; Cornipro tandem stock trailer; round bales of hay; gravity wagon; Cowco head gate and chute; Rubbermaid and Vitaform troughs; "T" and wood posts, RR ties; wire and fencing equipment; pipe gates; cattle equipment.

Zero Turn, Four-Wheelers and Shop Equipment: JD Z925A zero-turn mower; Honda-A-matic Foreman 4 wheeler with spreader; Honda Rubicon 4-wheeler; Honda Blackhawk 7000 generator; Kobalt 30 gal. air comp; radial arm saw; Honda pressure washer; ProSeries battery charger; acetylene outfit; diesel fuel tank and pump; Echo pole chain saw; Stihl chain saws; Porter Cable 1/2 in. drill; cordless drill; grinder; work bench and vice; anvil; drill press; ladders; chains; jacks; blower; fan; wrenches; ramps; vac; wheel barrow; hedge trimmer; shop lights; old platform scales; log tongs; old horse gear; primitive tools.

Furniture, Appliances and Miscellaneous

Dining table and six chairs; china cabinet; roll top desk; office chair; full size beds; dresser; metal desk; plaid settee; recliner; rockers; wood chairs; bar stools; bevel glass-top tables; gossip bench; small tables; bookshelf; corner what-not; quilt rack. Samsung side-by-side refrigerator with ice maker; older refrigerator; up-right freezer; Whirlpool washer and dryer; Cannon gun safe; Samsung flat screen TV's; heater; dehumidifier; big coolers; vacuum; John Deere collectables; Wm. Rogers flatware and chest; clocks; globe on stand; school desk; cookware; glassware; lamps; pictures; mirrors & more.

Terms: Real Estate – 10% down at the auction; balance by May 12th, 2007; taxes will be prorated and collect at closing; possession with deed; bidders have ten days prior to the auction for lead-based paint inspection. **Personal Property:** Cash, check or credit card (\$3,000 limit per purchaser on credit cards). **No Buyer's premium.**

Auctioneer's Note – Mr. Newman cared deeply for his farm and farm machinery and you will be pleased with the very tasteful remodeling of his home as well as the quality and condition of his equipment and furniture.

See more pictures and an aerial video of the farm at kurtzauction.com.

For more information contact Amy Whistle, CAI or Bill Kurtz, CAI, Auctioneers.

KURTZ
AUCTION & REALTY®

270-827-4344
800-264-1204
kurtzauction.com



JD 4410 and 300 CX Loader



JD Z925A Zero Turn Mower



HondAmatic Foreman



Dining Table and Six Chairs

Sellers: Donald A. Newman Estate
Farrah L. Corbett, Executrix

Estate

AUCTION

Thurs. March 30th, 10:00 AM

Location: 17371 HWY 416, Henderson, KY. From the Hebbardsville Exit on the Audubon Parkway, ten miles east of Henderson, go north on HWY 416 two miles, then east in Hebbardsville one mile to the property. Watch for signs.

Kurtz Auction & Realty Co. has been authorized to sell the following for the Donald A. Newman Estate **regardless of price:**

117.42 ACRES
in East Henderson County
Remodeled Home – Barns
Selling in 5 Tracts

**Farm Machinery – Pickup
Shop Equipment
Tools – Furniture**

Auction being conducted for the
Donald A. Newman Estate,
Farrah L. Corbett, Executrix

270-827-4344
800-264-1204
kurtzauction.com

2017 Announcements made day of sale take precedence over printed material.



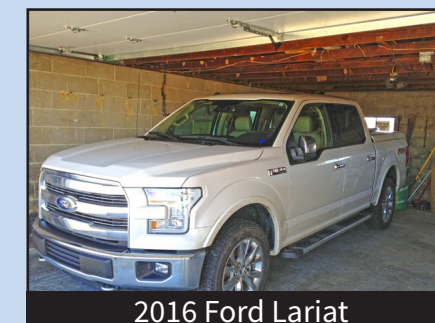
Remodeled home on Tract #3



Barn on Tract #2



Lake on Tract #2



2016 Ford Lariat



2006 John Deere 7220 S

See inside and back for details

KURTZ
AUCTION & REALTY®

117.42 ACRES +/-

FIVE TRACTS

Tract Information:

Tract #1 – 17.635 acres ± of flat to gently rolling cleared cropland with 554.72 ft. of frontage on Pleasant Hill Road.

Tract #2 – 50.718 acres ± gently rolling to hill pastureland with metal stock and tobacco barn with water and electricity, small barn and lake. It has 1,970.33 ft. of frontage on HWY 416 and 757.9 ft. on Pleasant Hill Road.

Tract #3 – 17.580 acres ± of hill pastureland with home, farm buildings and 1,264.94 ft. of frontage on the south side of HWY 416.



Back of Home on Tract #3



Morton Building on Tract #3

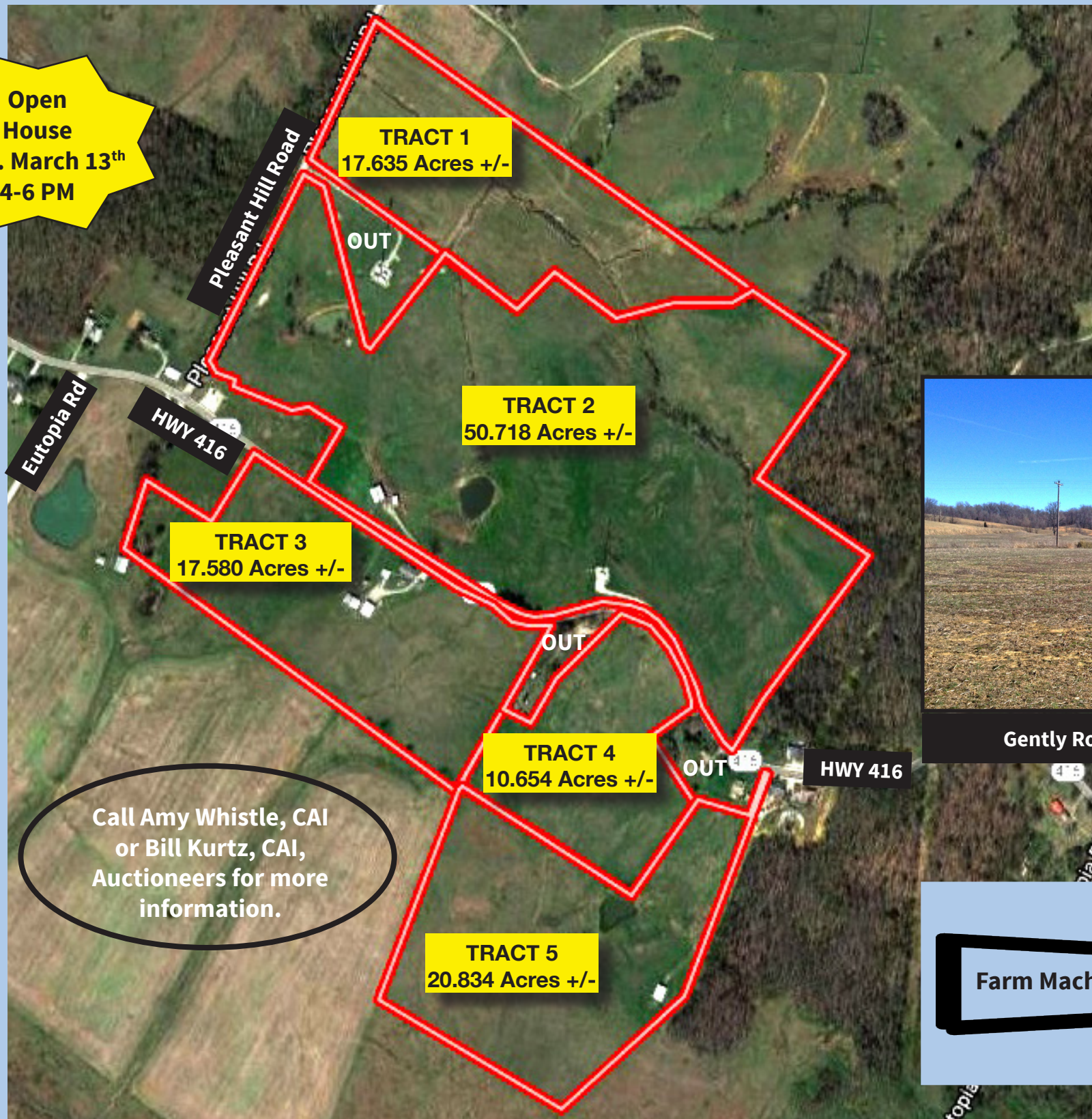
This newly remodeled home has a master bedroom with master bath with water jet tub, shower, double vanity and walk-in closet. The second bedroom has its own private full bath. The kitchen has built-in range-top, oven, microwave and dishwasher. Other space includes a dining room, family room, laundry hookups and partial basement. The home has metal siding, bottle gas heat, central air conditioning, replacement windows, newer furnace and hot water heater and a beautiful view from its hilltop perch.

Farm buildings on Tract #3 include this newer Morton tool shed with electricity and water, a metal stock barn, a three-bay storage building, a smokehouse, a grain bin and a two-car garage.

- ***New survey on all tracts***
- ***Planning and Zoning approved***
- ***County water available***
- ***Fencing and water for livestock***
- ***No reservations on minerals***

KURTZ
AUCTION & REALTY.

Open House
Mon. March 13th
4-6 PM



Call Amy Whistle, CAI
or Bill Kurtz, CAI,
Auctioneers for more
information.

Tract #4 – 10.654 acres ± of rolling hill pastureland with 463.24 ft. of frontage on HWY 416.

Tract #5 – 20.834 acres ± of gently rolling pastureland with pond, barn and 40.84 ft. of frontage on HWY 416.



Gently Rolling Cropland on Tract #1

