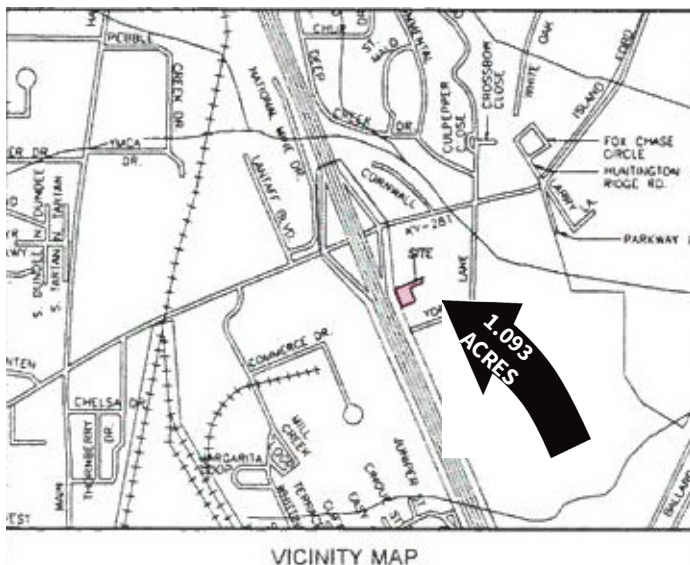
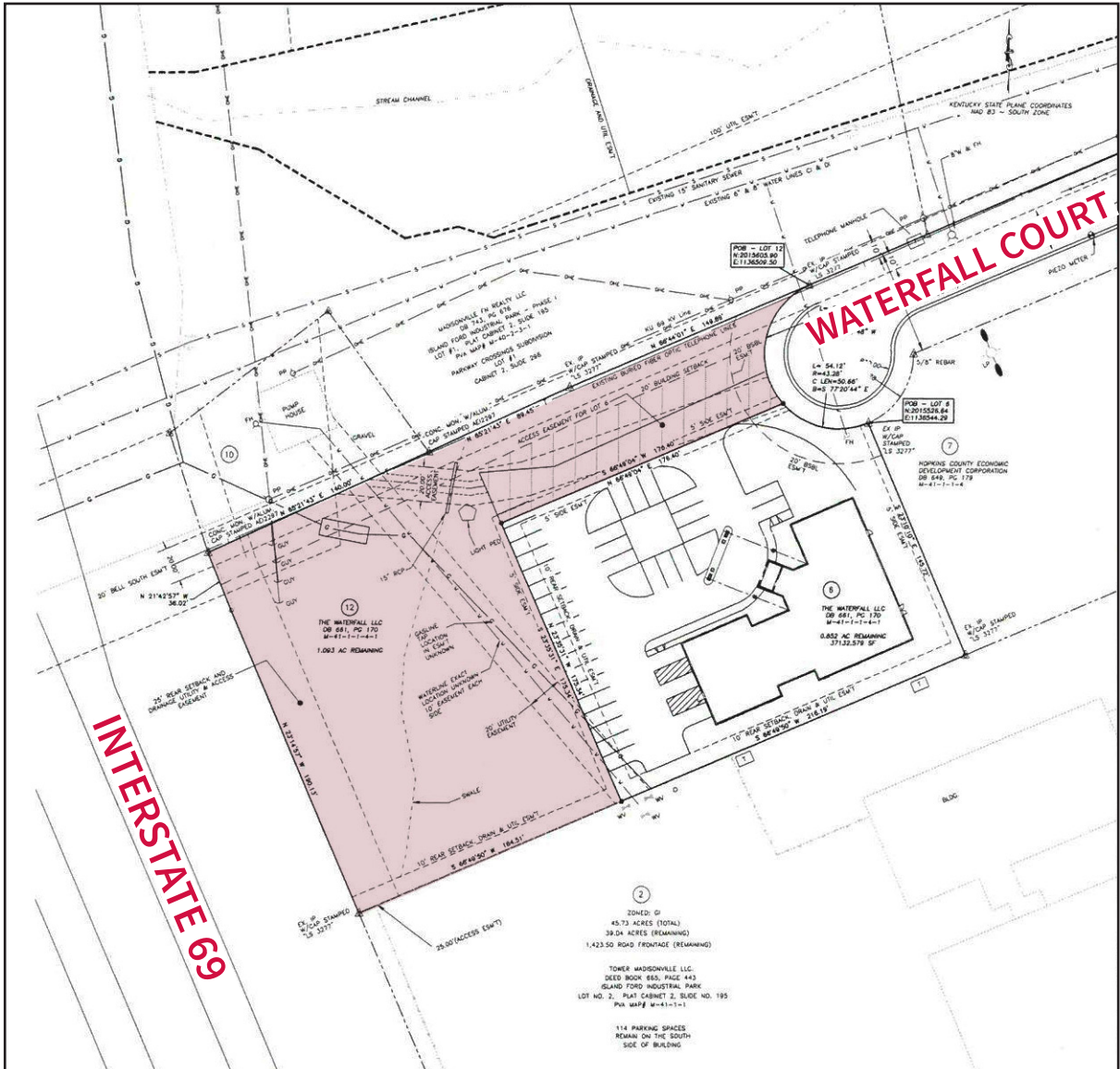


Prime Commercial Lot For Sale

In Northeast Madisonville's Busy Business Area



- Excellent I-69 exposure
- Former Natcher Parkway's Exit #44
- 1.093 Acres
- Recent Survey
- Utilities available
- On Waterfall Court
- Busy business neighborhood
- Adjacent to Fresenius Kidney Care
- \$200,000

Call Bill Kurtz, Broker
800-264-1204
270-926-8553
270-929-0327
kurtzauction.com

KURTZ
AUCTION & REALTY®