



WEBSTER COUNTY FARM

AUCTION

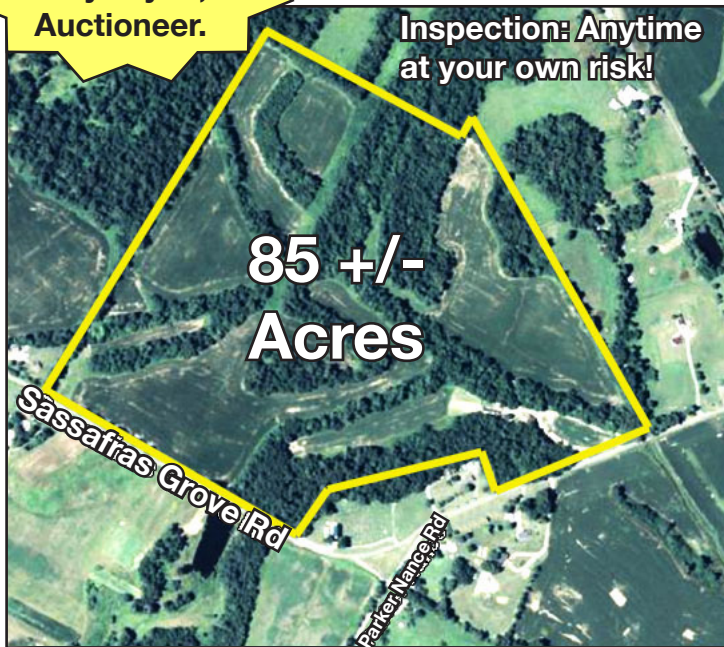
WEDNESDAY JAN. 6TH, 10:00 A.M.

Location: From the intersection of HWY 41 and Sassafras Grove Road just south of Sebree, KY, take Sassafras Grove Road east 1.8 miles to the property. Watch for signs!

In accordance with Civil Action No. 15-CI-00166, **Kurtz Auction & Realty Co.** has been authorized to sell the following:

For more
info contact
Clay Taylor,
Auctioneer.

85 +/- ACRES



- FSA office calls for 85 acres of farmland with 51.88 acres of cropland
- Abundant blacktop road frontage along Sassafras Grove Road
- The predominant soil types are Collins, Alford and Hosmer Silt Loams
- Producing cropland with an abundance of wildlife



Also selling: 2013, 76' x 16', 3 bedroom, 2 bath mobile home to be sold separately.

TERMS: 10% down day of sale, balance due by Feb. 5, 2016. Possession with deed.

No mineral rights are involved in this sale.

Owner: Jerry Buchanan, Jr.

Announcements made day of sale take precedence over printed material.



kurtz

AUCTION & REALTY CO.

270-926-8553

800-264-1204

305 FREDERICA STREET
OWENSBORO, KENTUCKY 42301
kurtzauction.com

2016