

# AUCTION

**Thurs. March 23<sup>rd</sup>**

**10:00 AM**

**Location:** HWY 256 and HWY 1792, Calhoun, KY. From the intersection of Main Street and First Street in downtown Calhoun head west for approximately three miles. Watch for signs!

**Auction Site:** All three tracts will be sold from the mound on Tract #1 on HWY 256.

The Sam Revlett Heirs have authorized Kurtz Auction and Realty Co. to sell the following regardless of price:

## 462 ACRES IN THREE TRACTS

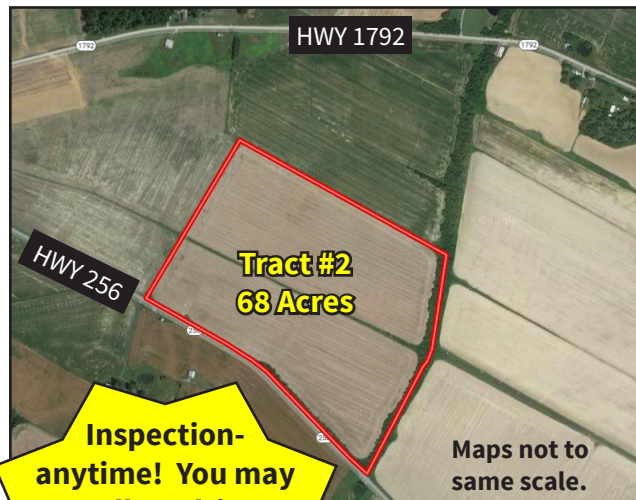


### Tract 1

- 349.47 acres in one contiguous tract
- The land is flat and has been tilled
- The primary soil type is Karnak silty clay
- 6,035.68' of frontage on HWY 256
- A new survey has been completed on this tract

### Tract 2

- 68 acres per deed description
- The lay of the land is flat with the primary soil type being Karnak silty clay
- Approximately 2,230' of frontage on HWY 256



### Tract 3

- 45.42 acres per deed description
- The lay of the land is flat and has been tilled
- The primary soil types are Karnak silty clay, Karnak silt loam and Belknap silt loam
- Approx. 1,530' of frontage on HWY 1792

**Terms:** 10% down on the day of sale with the balance by May 8, 2017. Farming rights will be granted the day of sale. Full possession with delivery of deed. Purchaser will pay 2017 property taxes. Seller is transferring all mineral rights they own, if any. Some minerals have been previously reserved.



**Inspection-anytime! You may walk or drive around on this farm at your own risk.**

**270-926-8553**

**800-264-1204**

**kurtzauction.com**

*For more information contact Clay Taylor, Auctioneer or go to [kurtzauction.com](http://kurtzauction.com) for fly-over photography and other information.*

**Owners: Sam Revlett Heirs**

**KURTZ**  
AUCTION & REALTY®