

ABSOLUTE AUCTION

TUES. MARCH 6TH 4:30 P.M.

Location: HWY 144 and St. Lawrence Spur, ten miles east of Owensboro, KY and approximately one mile southeast of the community of Knottsville. From the intersection of HWY 144 and the Owensboro By-Pass take HWY 144 approximately ten miles east to the property. Watch for signs!

In order to focus our attention on our other farms, Kurtz Auction & Realty has been authorized to sell the following **regardless of price:**

85.351 ACRES – TWO TRACTS Hunting-Recreation-Home Sites

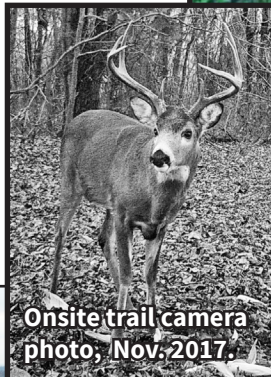
TRACT 1 - 35.274 Acres

- Gently rolling to rolling ground with a mixture of pasture and woods
- Approximate 1.75-acre lake
- Several potential home sites with stunning views of the lake and the countryside
- 1085.38 ft. of road frontage along St. Lawrence Spur

TRACT 2 - 50.077 Acres

- Rolling to gently rolling ground with a mixture of pasture and woods
- Two small ponds
- 718.35 ft. of frontage along St. Lawrence Spur and 192.15 ft. of frontage on HWY 144

Utilities available electricity, water and include natural gas.



Auctioneers Note: *Whether you are an outdoorsman, cattle farmer or looking for that perfect spot for a dream home, this farm is for you. Bountiful wildlife, fishing, breathtaking views and all the privacy you could ever want, all just ten minutes from the Owensboro By-Pass. Be prepared to bid as this property sells to the highest bidder, regardless of price.*

–Clay Taylor, Auctioneer

For more information, a drone flyover, survey and previous mining maps go to kurtzauction.com. View the property anytime at your own risk! For any questions call Clay Taylor, Auctioneer.

Owner: Nick Wink Heirs

270-926-8553
800-264-1204
kurtzauction.com

KURTZ
AUCTION & REALTY®