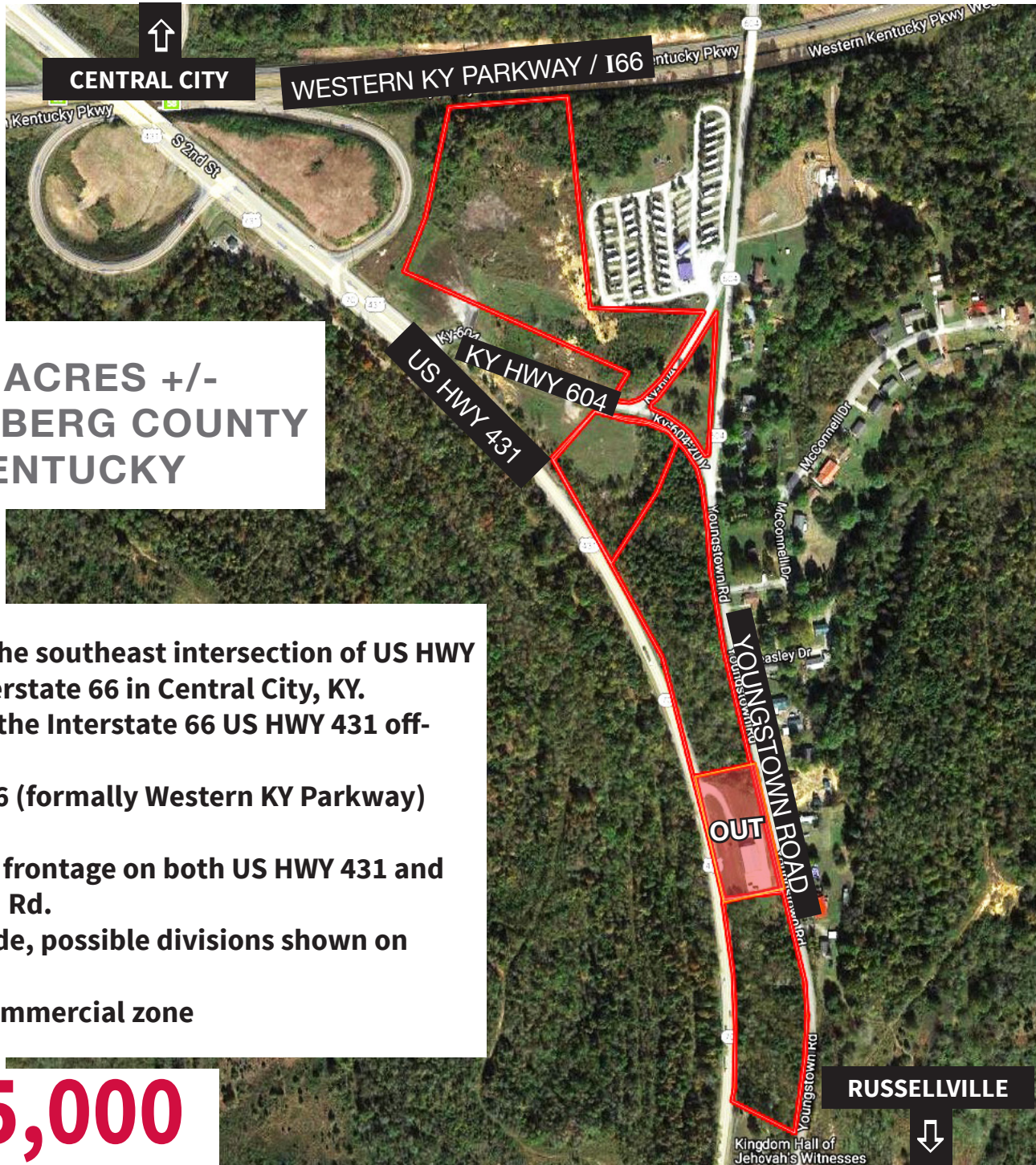


COMMERCIAL ACREAGE FOR SALE



18.5 ACRES +/-
MUHLENBERG COUNTY
KENTUCKY

- Located at the southeast intersection of US HWY 431 and Interstate 66 in Central City, KY.
- Adjacent to the Interstate 66 US HWY 431 off-ramp
- Interstate 66 (formally Western KY Parkway) exposure
- Lots of road frontage on both US HWY 431 and Youngstown Rd.
- Will subdivide, possible divisions shown on aerial map
- Business/Commercial zone

\$395,000

FOR SALE
Muhlenberg County, KY
Commercial Property
270-926-8553
800-264-1204

For more information contact
David Hawes, Agent.
270-929-1211
kurtzauction.com

KURTZ
AUCTION & REALTY®