

AUCTION

THURSDAY, JUNE 16TH 10:00 AM

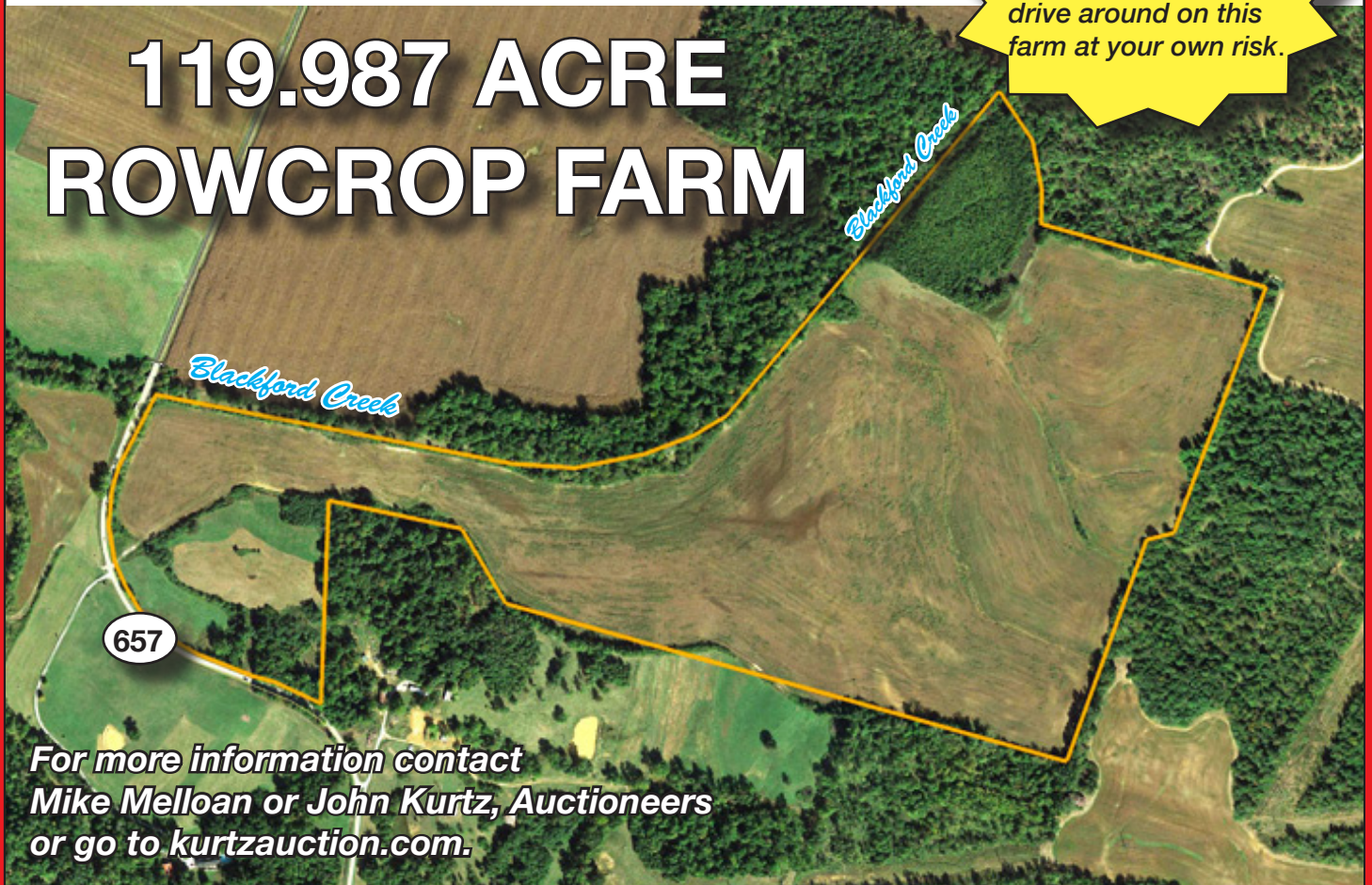
Location: 10550 State Route 657, Lewisport, Kentucky. From Owensboro, Kentucky at US Highway 60/231 and State Highway 144, take Highway 144 east 2.6 miles, then north on Highway 1389, 7.4 miles, then north on State Highway 657 0.5 miles to the property. From Lewisport, Kentucky at the intersection of US Highway 60 and State Highway 657, take Highway 657 south 7.6 miles to the property. Watch for signs!

Auction Site: Former Thruston Elementary School, 5650 Highway 144, Thruston, KY.

In accordance with Western Kentucky Bankruptcy Court Case No. 11-40135, Kurtz Auction & Realty has been employed to sell the following:

*Inspection – anytime!
Feel free to walk or
drive around on this
farm at your own risk.*

119.987 ACRE ROWCROP FARM



**For more information contact
Mike Melloan or John Kurtz, Auctioneers
or go to kurtzauction.com.**

- A newer survey has been completed so acreages and distance should be accurate.
- The FSA office calls for 103.77 acres of cropland.
- The lay of the land is from flat to rolling with the predominant soil types being Belknap, Hosmer and Wellstone silt loams.
- The farm is mainly open cropland with a small amount of woods.
- 965' of frontage on Highway 657 and more than 4,000' of frontage on Blackford Creek.
- A portion of this land is not in the flood plain and has good home sites.
- No reservations are being made with regard to any mineral rights owned.

TERMS: 10% down day of sale with the balance due with delivery of the Bankruptcy Trustee Deed on or before July 31, 2016. Farming right granted day of sale; full possession with deed. 2015 property taxes will be paid by the seller, 2016 property taxes will be paid by the buyer. Property sells subject only to US Bankruptcy Court approval.

Hon. Roberta Dunlap, Trustee in Bankruptcy

Announcements made day of sale take precedence over printed material.



270-926-8553

800-264-1204

305 FEDERICA STREET
OWENSBORO, KENTUCKY 42301
kurtzauction.com

2016