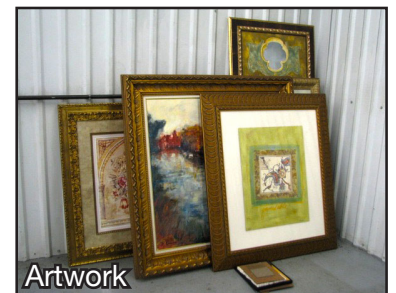




Glass-top Table



Artwork



Lionel Engines

**The following items
sell starting at 10 AM**



Patio Furniture



Mowing Equipment

Kurtz Auction & Realty Co.
305 Frederica Street
Owensboro, KY 42303

PRESORT STD
U.S. POSTAGE PAID
OWENSBORO, KY
42301
PERMIT #563

Modern Furniture: Large handmade inlaid, solid top table with ten side chairs and two captain chairs; Ethan Allen Townhouse king size bed with armoire and dresser; king bed with three-drawer chest, side table and two lamps; ornate carved lamp table; double base glass top dining table, ¾" glass; eight matching, upholstered dining chairs; woven flat wicker sofa and two matching chairs; leather recliner; sofa; several upholstered chairs; four-leg desk and other desk; wood top table and four chairs; metal base wood top and glass top tables; round oak claw-foot table; four metal base bar stools; two wood bar stools, library table; wicker back bar stools; inset marble-top buffet; TV cabinet; misc. chairs; rocker; serving cart; large plant stand and other items.

Patio Furniture: Wicker base glass-top table and five chairs; (2) wicker-style settees; lounge chairs, gliding chair and cabana set; wicker sofa, chair, coffee table and lamp table; six cushion-style metal chairs, matching recliners and table; several large planters with live plants and two mobile umbrellas with stands.

Decorator Accessories: Large assortment of framed artwork with several large pieces including a gold framed oil on canvas; mirrors; large assortment of glass pieces, vases, and bowls; large vase; floral arrangements and planters; area rug; lamps; stem-ware; china; bedding and pillows.

Lionel Train: A large assortment of engines, cars, track, lighting, transformers, buildings and tables for setup.

Miscellaneous Items: Virtua V.R. two seat electric racing station; Body Solid four station exercise machine; Meade 10" electronic telescope with numerous attachments, stand and case; eight sets of golf clubs with bags; old standard meat scale; old accordion; mounted marlin; heated plant starter cart; log rack; firewood; Christmas decorations, books and other items.

Mowing Equipment: John Deere 2240 diesel tractor, 2770 hrs.; Land Pride AFM 4211 pull-type finish mower; Grass Hopper 721 D 52" diesel zero-turn mower with collection attachment.

TERMS: 10% down day of sale, balance in 45 days. Possession with deed. Farming rights on Tract #2 granted day of sale. 2016 Property taxes will be pro-rated between the seller and the buyers. Buyers portion will be based on a sale price percentage basis and collected at closing on Tracts 1, 2 and 3. Cash, check, Visa or MasterCard in full day of sale on personal property.



Call Joe Mills, Auctioneer for more information or
to see the property.

270-926-8553

800-264-1204

More photos at kurtzauction.com

UNION COUNTY, KENTUCKY

AUCTION

THURSDAY, APRIL 21ST
10:00 AM AND 4:00 PM

Location: From Sturgis, KY take HWY 109 northwest
seven miles to the property. Watch for signs.

*In order to liquidate our jointly-owned property, we have relocated
and have authorized Kurtz Auction & Realty Co. to sell the following
to the highest bidder regardless of price with no minimum bid:*



Home on Tract #1

Selling at 10 AM

SALE #1 – 43.06 ACRES IN THREE TRACTS
**LARGE CUSTOM HOME – CROPLAND – INDUSTRIAL-
STYLE BUILDING**

**MODERN FURNITURE – ARTWORK – LIONEL TRAIN
EQUIPMENT – MOWING EQUIPMENT**

ALL SELLING AT 10:00 AM



Building on Tract #3

Selling at 10 AM

**For times of scheduled showing or additional
information, call Joe Mills, Auctioneer.**



68 N. Wallace

Selling at 4 PM

**SALE #2 – 12,000 SQ. FT. INDUSTRIAL BUILDING
IN THE STURGIS INDUSTRIAL PARK**

SELLING AT 4:00 PM

Owners:
Bill Baird and Jan Baird

**SEE INSIDE AND BACK
FOR LIST AND DETAILS**



2016

270-926-8553

800-264-1204

305 Frederica Street
OWENSBORO, KENTUCKY 42301
kurtzauction.com

Tracts 1, 2 and 3

SELLING AT 10 AM

Tract #1

15.46 acres of highly improved gently rolling land, with large custom home, gated blacktop drive, four-board vinyl fencing, stamped concrete, irrigation system, lake, barn and tool shed

Home Features

- Brick home with 4,650 sq. ft. of living area on the main level plus a 3,350 sq. ft. finished basement, three-car attached garage with tile floor, storage area and a 15+/- kw Quiet Source backup generator
- Great room with 26 ft. tall ceilings, stone fireplace, built-ins, hardwood flooring with inlay and custom doors and mouldings throughout the main level
- Center island designed kitchen with suspended hood, granite countertops, built-in gas cooktop with grill and griddle, stainless Subzero commercial refrigerator, double ovens, dishwasher and compactor
- Large dining room with tile floors and custom bar
- Master suite, dressing area, double walk-in closets, large whirlpool tub, steam shower and porch
- Two additional bedrooms with full bath and two ½ baths
- Sunroom with open ceiling and natural stone floor
- Walkout basement with fourth-car garage, family room with fireplace and insert, cinema room with screen and projector; two bedrooms with full bath, utility room, exercise room and large storage room with attached metal shelving
- Approximately three-year-old outdoor entertaining area with large saltwater pool, fountain, custom lighting, covered outdoor kitchen with large fireplace, wood-top bar, built-in Viking grill with oven, Viking refrigerator and ice machine, and custom stainless smoker
- Greenhouse with central heat and air, cabinets, sink and half bath on the main level and storage/kennel below

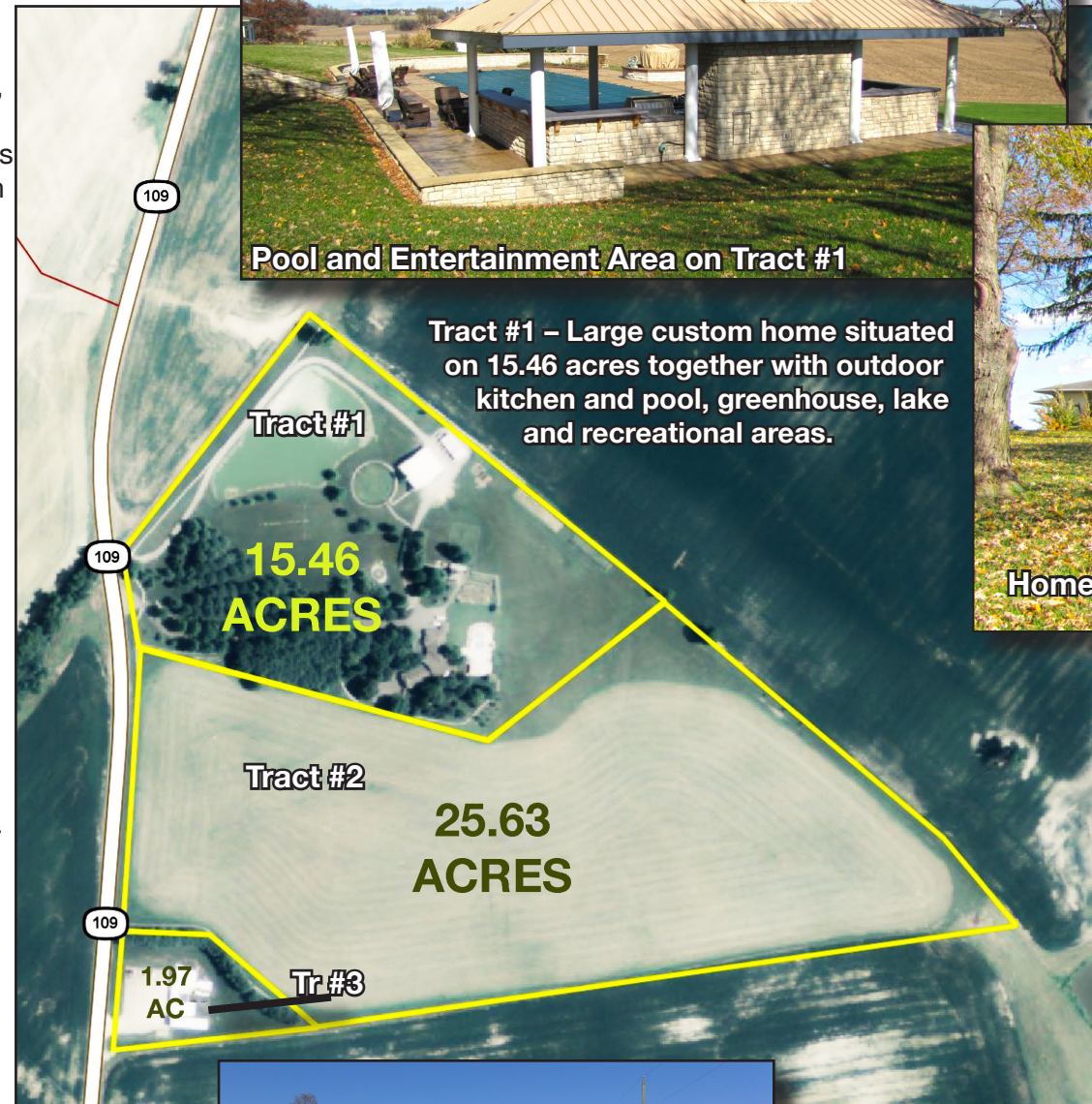
Tract #2

25.63 acres of gently rolling cropland presently in grass with four board vinyl fencing along HWY 109, great building site and 569 ft. of blacktop frontage. Farming rights granted day of sale!



Pool and Entertainment Area on Tract #1

Tract #1 – Large custom home situated on 15.46 acres together with outdoor kitchen and pool, greenhouse, lake and recreational areas.



Building on Tract #1



Entrance on Tract #1

Tract #3

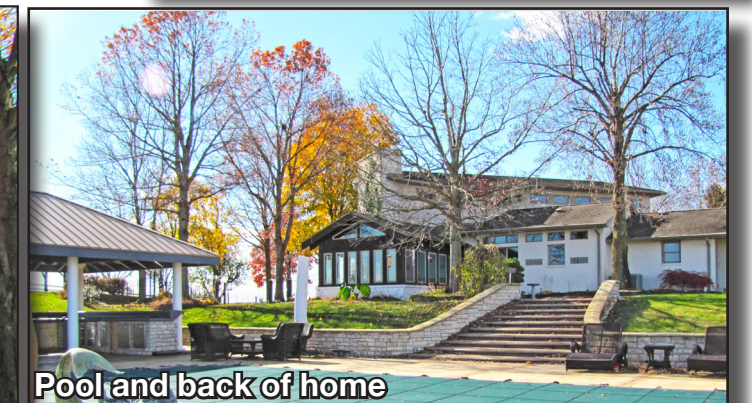
- 6,600 sq. ft. industrial-style clear span building situated on 1.97 acres with security fencing and auto-opening gate.
- Steel I-beam construction, insulated and finished concrete floor
- Climate controlled central heat and air conditioning, fully wired, office area, storage room, restrooms and clean room
- Attached semi bay with overhead door
- Lots of concrete parking, exterior lift and several overhead doors
- Possible uses are endless!



Clear Span Building on Tract #3



Home on Tract #1



Pool and back of home

See terms & conditions and personal property list on back.

SELLING AT 4:00 PM

68 N. Wallace in the Sturgis Industrial Park at the airport.

Location: From Sturgis, KY take HWY 60 west one mile to the Sturgis Industrial Park (Airport/Fairgrounds). Turn east on Pryor Blvd. then north on N. Wallace for 1/10 mile. Watch for signs.

- Modern 12,000 sq. ft. insulated clear span I-beam constructed metal building situated on a 1.389 acre corner lot
- Large DeVilbiss paint booth
- Floor lifts, semi-height overhead doors, epoxy painted floors, interior metal paneling and lots of lighting
- Retail floor space, offices, restrooms, parts room and overhead storage
- Lots of wiring, ceiling fans and wall ventilation
- Blacktop parking



68 N. Wallace



Spray Booth



Interior of N. Wallace

270-926-8553 • 800-264-1204 • kurtzauction.com