

Farm For Sale

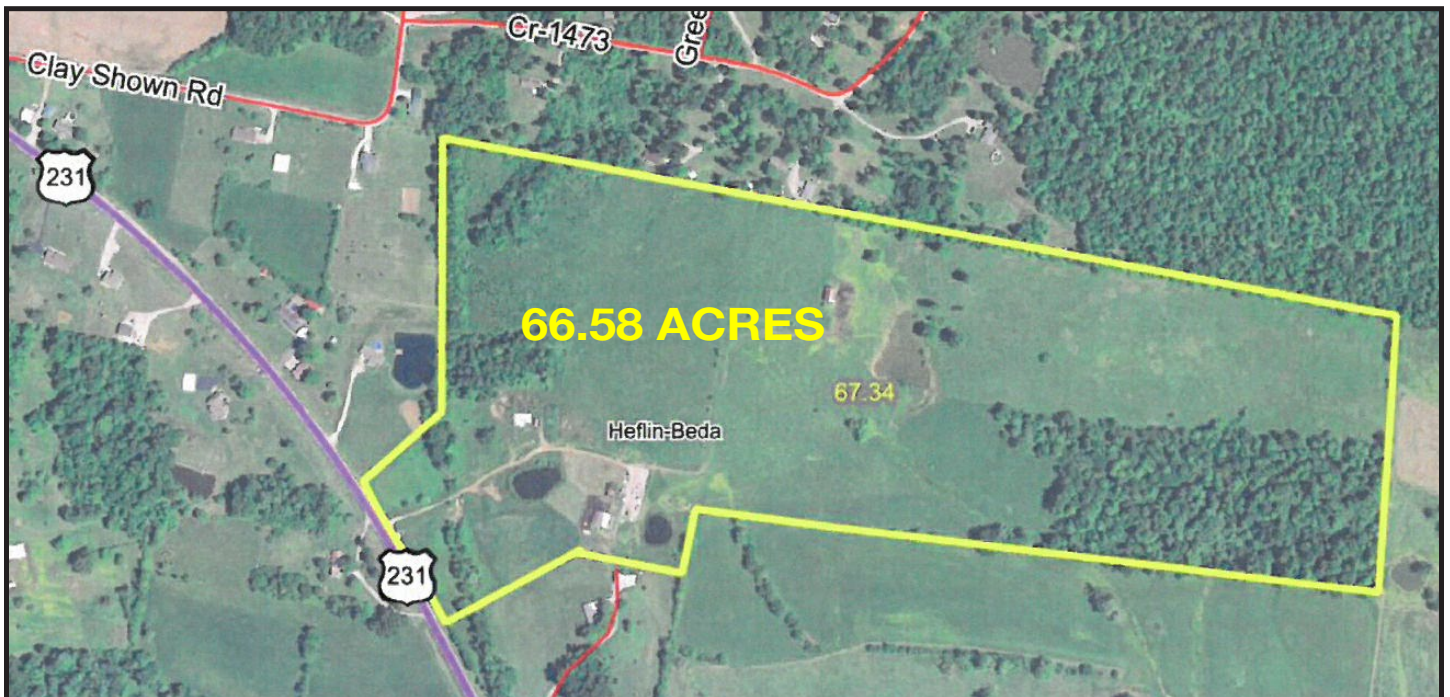
Ohio County
Kentucky

Location: 4354 U.S Hwy 231 N, 4.3 miles North of Hartford, KY and 16 miles South of Owensboro, KY. Watch for Signs

66.58 ACRES

Pasture - Cropland - Barns

Priced under \$3,600.00 an acre!



- Gently rolling Land presently in pasture with fencing and approximately 9 acres of woods
- 425 ft. of US Hwy 231 frontage
- Improvements consist of a hilltop home site with a poured concrete basement, electric, septic system, county water and natural gas; 2 barns, one which has water, 3 bay shed and 3 ponds (one stocked)
- **Priced to sell at \$239,000.00**
- Surveyed in two tracts

For copies of deeds, surveys, topo and soil maps or additional information, go to www.kurtzauction.com or call Joseph Mills, agent at 270-903-9641 cell or 1-800-264-1204 office to schedule a showing



270-926-8553

800-264-1204

kurtzauction.com

KURTZ

AUCTION & REALTY®