

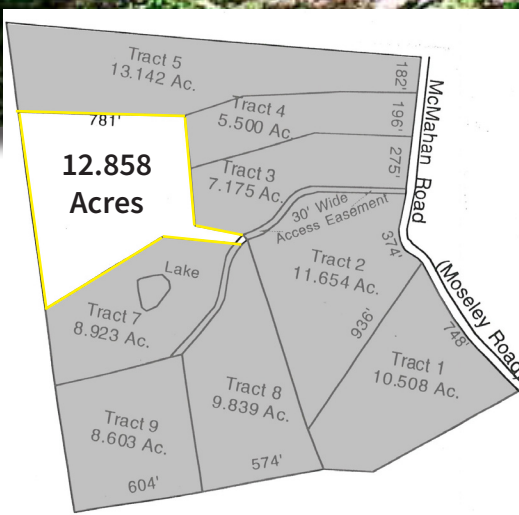
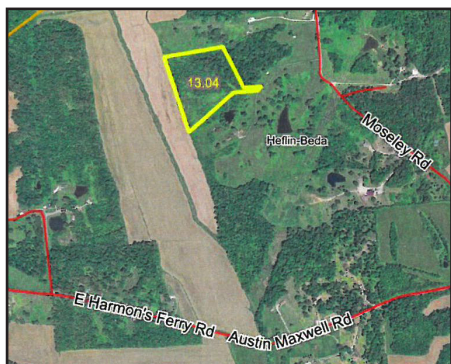
Ohio County, Kentucky
Farm for Sale

Location: From Owensboro, KY, take US HWY 231 south 6 ½ miles to Red Hill – Maxwell Rd, take Red Hill – Maxwell south 6 ½ miles to McMahan Rd (Mosley Rd) then turn east for 1.65 miles. Turn west on access drive for 1/10 mile to property. Watch for signs.

12.858 ACRES

Priced under \$3,500 an acre !

- Ideal home site, recreational & Mini farm tract
- County water & electricity available
- Survey done in 2004
- Located approximately 4 miles south of the Redhill Community & 2 ½ miles southwest of Pleasant Ridge, just across the Daviess County line



**Price to sell at
\$44,900**

For copy of deed, survey, topo and soil map or additional information, go to kurtzauction.com or call Joseph Mills, agent at 270-903-9641 cell or 1-800-264-1204 office to schedule a showing.

270-926-8553

800-264-1204

kurtzauction.com

KURTZ
AUCTION & REALTY®