

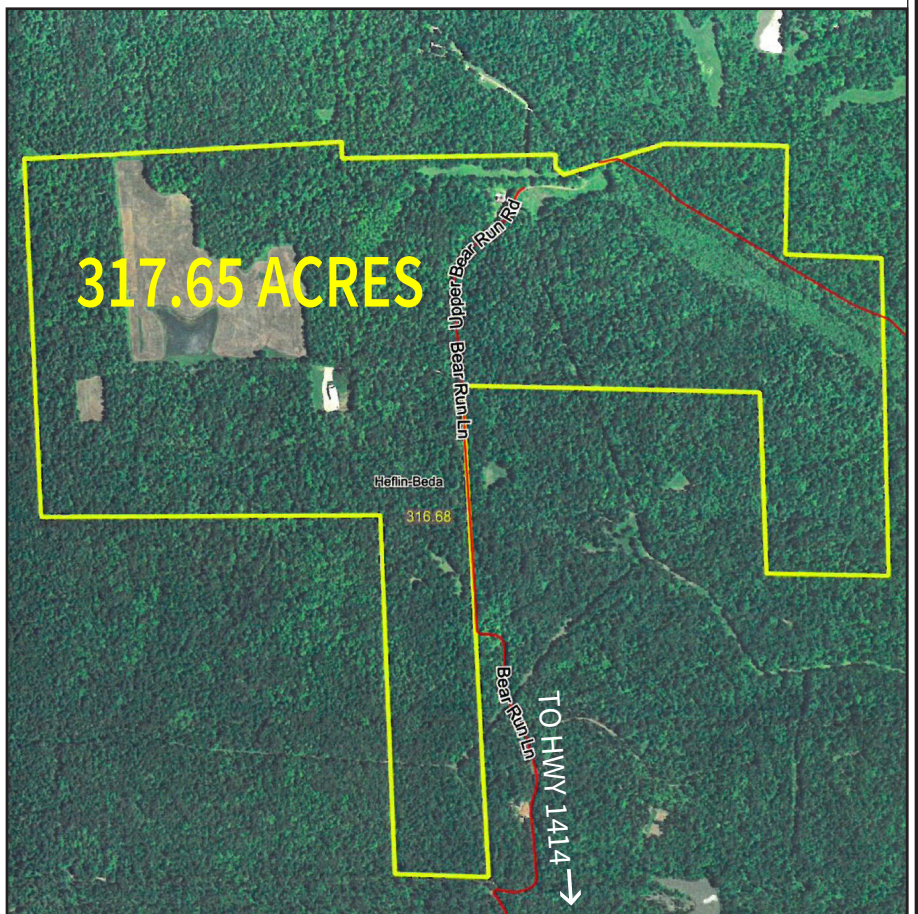
For Sale

Location: Upper Bear Run Road approximately 1.5 miles north of HWY 1414 between Hoover Hill and Taffy between Owensboro and Hartford, Kentucky.

Ohio
County

317.65 ACRES

HUNTING, RECREATION MARKETABLE TIMBER



\$759,000

Description: Excellent hunting ground with a gated entrance, as well as mature marketable timber located in Ohio County, Kentucky. This farm comes ready to go with a newer 50 ft. x 70 ft. clear span building, 287 acres +/- of timber, 30 acres +/- of cropland / food plots; 1 acre +/- lake. A large portion of the farm was surveyed in 2005 providing accurate boundary lines.

For additional information or to schedule a showing contact Joe Mills, Agent (270-929-5020) or Joseph Mills, Agent (270-903-9641). More photos and information at kurtzauction.com.

270-926-8553

800-264-1204

kurtzauction.com

KURTZ

AUCTION & REALTY®