

Adjoining Building Lots Just South of Owensboro, KY



AUCTION

**Thursday, November 30th
4:00 PM**

Location: From the Owensboro Community College on the south side of Owensboro, KY, take US HWY 231 south three miles, just south of Masonville at Sutherlin Lane. Watch for signs.

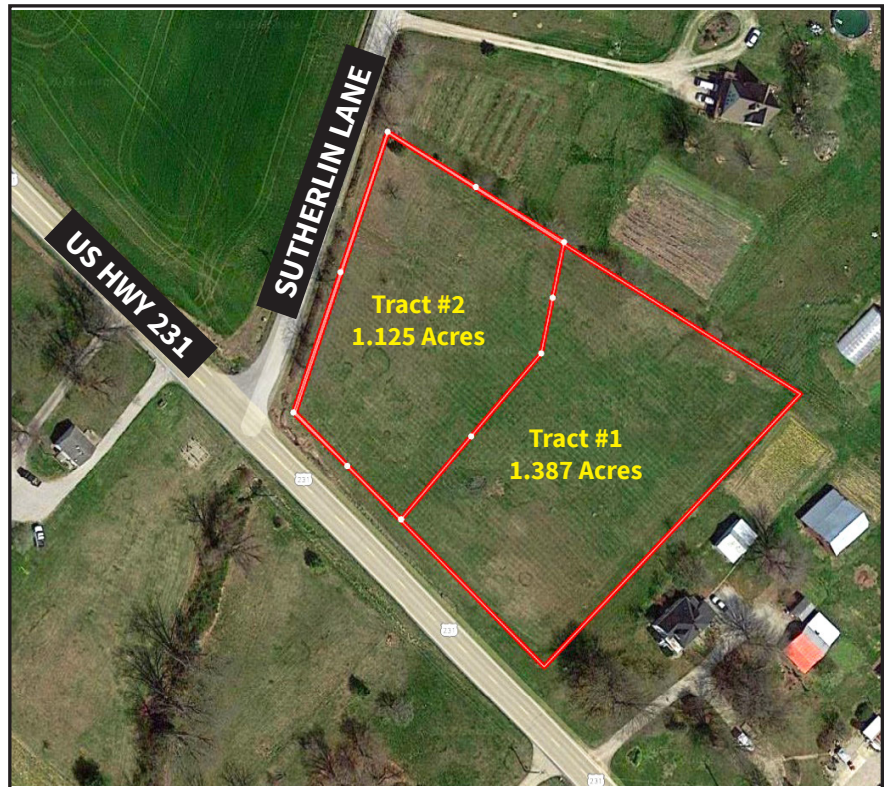
As we no longer have a use for these building lots we have authorized Kurtz Auction & Realty Co. to sell the following to the highest bidder **regardless of price with no minimum bid:**

2.51 ACRES – TWO ADJOINING TRACTS

- Located in the shadow of Owensboro with access to natural gas and county water.
- Both tracts have good building sites
- Gently rolling topography in grass
- Tract #1 has 183 ft. of frontage on US HWY 231 and Tract #2 has 103 ft. of US HWY 231 frontage and 264 ft. on Sutherlin Lane at your own risk.
- **Inspection anytime! For an aerial photo and copy of the survey, go to kurtzauction.com or call Joe Mills, Auctioneer or Joseph Mills, Agent and Apprentice Auctioneer.**

Terms: 10% down at the auction, balance in 30 days. Possession with deed. Seller to pay for the 2017 property taxes.

Owner: Lewis and Betty Oldham



270-926-8553

800-264-1204

kurtzauction.com

KURTZ
AUCTION & REALTY®