

ABSOLUTE AUCTION

TUESDAY, MARCH 13TH

To aid in settling the Elizabeth Ann Medley Estate, Kurtz Auction & Realty has been authorized to sell the following **regardless of price**:

At 10 AM

Tract #1 - 55 Acres +/-

Location: From the Natcher Parkway at Hartford, Kentucky, take HWY 69 northeast nine miles, then east on HWY 878 one mile, then north on Schultz Road one mile to the farm.

- Gently rolling cropland
- Blacktop frontage on north and east
- Rental house
- Metal barn (poor condition)
- Pond

Tract #2 - 22.78 Acres +/-

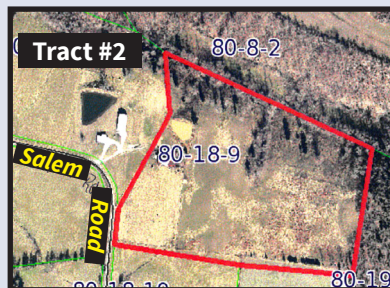
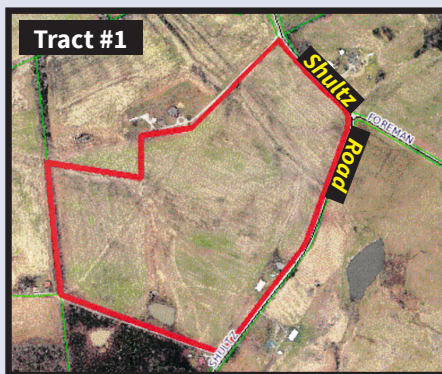
Location: Between Dundee and Rosine, Kentucky. From Cedar Grove Church at HWY 1164 and HWY 1544 take HWY 1544 south ½ mile, then east on Salem Road two miles.

- Gently rolling crop or fenced pasture land
- Some wooded land
- Large barn
- Pond
- Blacktop frontage

Selling Separately, Vehicles & Miscellaneous:

Int. bus; horse trailer; fuel tank; horses and mules on Tract #2 and an old tractor on Tract #1.

Auction Site for tract #2 and the above vehicles, livestock and miscellaneous items will be from Tract #1 on Schultz Road.



Rental Home on Tract #1



Barn on Tract #2

More photos at kurtzauction.com, for details contact Jim Knott or Bill Kurtz, Auctioneers.

NOON

Tract #3 - 11.18 Acres on Lake Washburn

Location: From the Natcher Parkway at Hartford, take HWY 69 northeast five miles, then west on Round Hill Road one mile, cross Lake Washburn Dam then left on Lake Lane and go to the end.

- Wide frontage on Lake Washburn
- Good panoramic view
- Mobile home
- Mostly wooded
- Will be deeded in six tracts

Selling Separately, Vehicles & Misc.:

Silver Streak travel trailer; Ford Aerostar vans; Dodge Ram; pickups; tent frame



Mobile Home on Tract #3



Store Building on Tract #4



Lodge Building on Tract #5

Real Estate Terms: 10% down; balance within 30 days. Property taxes to be paid by the buyer for 2018. **Personal Property Terms:** Cash or check at the auction; no titles, parts only on vehicles.

AT 4 PM

Tract #4 - Old Store Building

.37-acre lot at 7051 HWY 56 in Downtown Sorgho, KY

Tract #5 - Old Lodge Building

.20- acre lot at 7039 HWY 56 in Downtown, Sorgho, KY

Owensboro Wagon sold by Bresler Hardware Co. in very good condition

Also Selling: Coke chairs; oak china cabinet; old wood burning range; oak sideboard; stacking book cases; dresser; swing; cash register; framed mirror; coal oil lamp; tins; cookie jar; glassware and large lots of furniture, appliances and miscellaneous in both buildings will be sold.



Owensboro Wagon

Auction being held for the Estate of Elizabeth Ann Medley

270-926-8553
800-264-1204
kurtzauction.com

Kurtz
AUCTION & REALTY®