

ESTATE

Mon. April 9th, 5:30 PM

AUCTION

Location: 910 Borders Lane, Bardstown, KY. From Bardstown, take HWY 150 southeast four miles then south on HWY 605, 1/2 mile then southeast on Borders Lane two miles to the auction site.

In order to aid in settling the Hattie T. Clements Estate, Kurtz Auction & Realty Co. has been authorized to sell the following at **absolute auction**:

71.791 ACRES – HOME – NINE TRACTS
BUILDING TRACTS – CROPLAND – RECREATIONAL LAND – RIVERFRONTAGE

Tract #1 - 5.07 acres with 472.93 ft. of road frontage

Tract #2 – 5.077 acres with 603.12 ft. of road frontage

Tract #3 – 5.313 acres with 200 ft. of road frontage

Tract #4 – 5.872 acres with 200.01 ft. of road frontage

Tract #5 – 27.771 acres with 72.5 ft. of road frontage

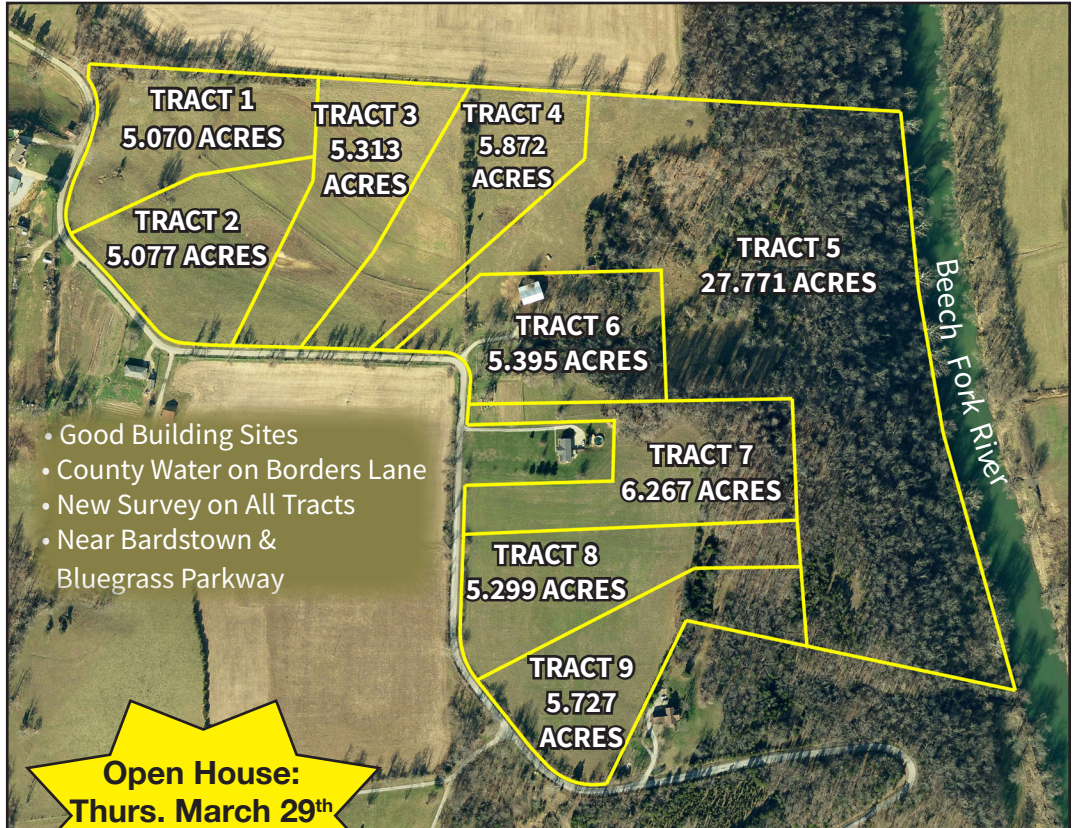
Tract #6 – 5.395 acres with a two –story, vinyl sided home, garage, barn and 285.02 ft. of road frontage

Tract #7 – 6.267 acres with 202.33 ft. of road frontage

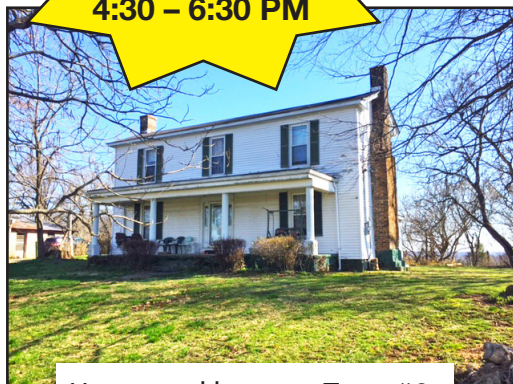
Tract #8 – 5.299 acres with 498.9 ft. of road frontage

Tract #9 – 5.727 acres with 507.45 ft. of road frontage

Terms: 10% down at the auction, balance on or before May 24, 2018. Possession with deed. Property taxes for 2018 will be paid by the purchasers and collected at closing. Prospective purchasers have ten days prior to the sale for lead based paint or other inspections. No mobile or modular homes. **NO BUYER'S PREMIUM.**



Open House:
Thurs. March 29th
4:30 – 6:30 PM



Home and barn on Tract #6



This property has been in the same family since 1801.

For information call Dwight Butler 270-688-2432 or Mike Melloan 270-929-1410.

Sellers: Hattie T. Clements Estate
William L. Clements and Eric Clements,
Co-Executors

270-688-2432

270-929-1410

800-264-1204

kurtzauction.com

KURTZ
AUCTION & REALTY®