

# ABSOLUTE AUCTION

Thursday, July 18th, 10 AM

**Location:** 696 Cowan Rd. Sullivan, KY

**Directions:** From Sturgis, take HWY 60 south to Sullivan, then southeast on Cowan Rd. 2 miles to the farm. Watch for signs.

## 150± Acres of Cropland - Hunting & Timber

To aid in settling the Harvey Cowan Estate Kurtz Auction & Realty Co. has been authorized to sell the following regardless of price.

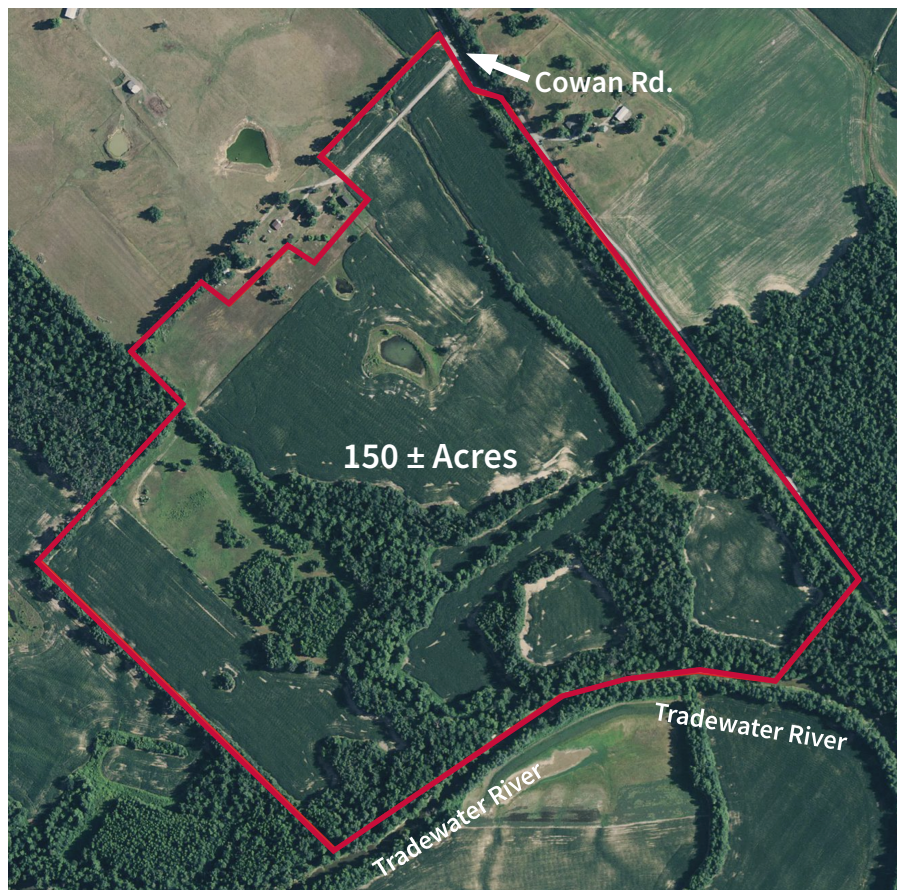


**PROPERTY FEATURES** Property consists of 150± acres with a mixture of cropland, marketable timber and multiple lakes.

- Approx. 100 acres of tilable per FSA
- Predominant soil types are McGary and Wilbur Silt Loams
- Road frontage on Cowan Road
- Wide frontage on Tradewater River

### Tractors, Tools & Collectibles

1972 Volkswagen Bug, 60's model 800 case tractor, (2) tricycle Case tractors (do not run), 15' bat wing rotary cutter- Rhino 3-point hitch log splitter, hay spear; 3 point hitch, bottom break-away plow, 10-12 ft. wheel disk, 4-row planter, post hole digger, hay rings, (2) 300 gallon fuel tanks with stands, 400 gallon ground fuel tank, bladder tank, 100 gallon fuel tank for truck bed, set of dolly axels for wagon, well pumps, metal swing set stand, Hobart welder, air compressors, old seed cleaner, saddles, drill press, floor jacks, ladders, shovels, bench grinders, corn sheller, Johnson 10 hp boat motor (doesn't run), electric heater, cast iron kettle, hand sanders, power tools, hand tools, scrap metal, lumber and other items



See [kurtzauction.com](http://kurtzauction.com) or call Tyler Edge, Auctioneer for more information, drone video and pictures.

**Terms: Real Estate:** 10% down at the auction, balance due by August 31st, 2019.

**Personal Property:** Paid in full at auction by cash, check, Visa or Mastercard.

**Owner:** Harvey Cowan Estate

800-264-1204

[kurtzauction.com](http://kurtzauction.com)

**KURTZ**

AUCTION & REALTY®

Announcements made the day of sale take precedence over printed matter